

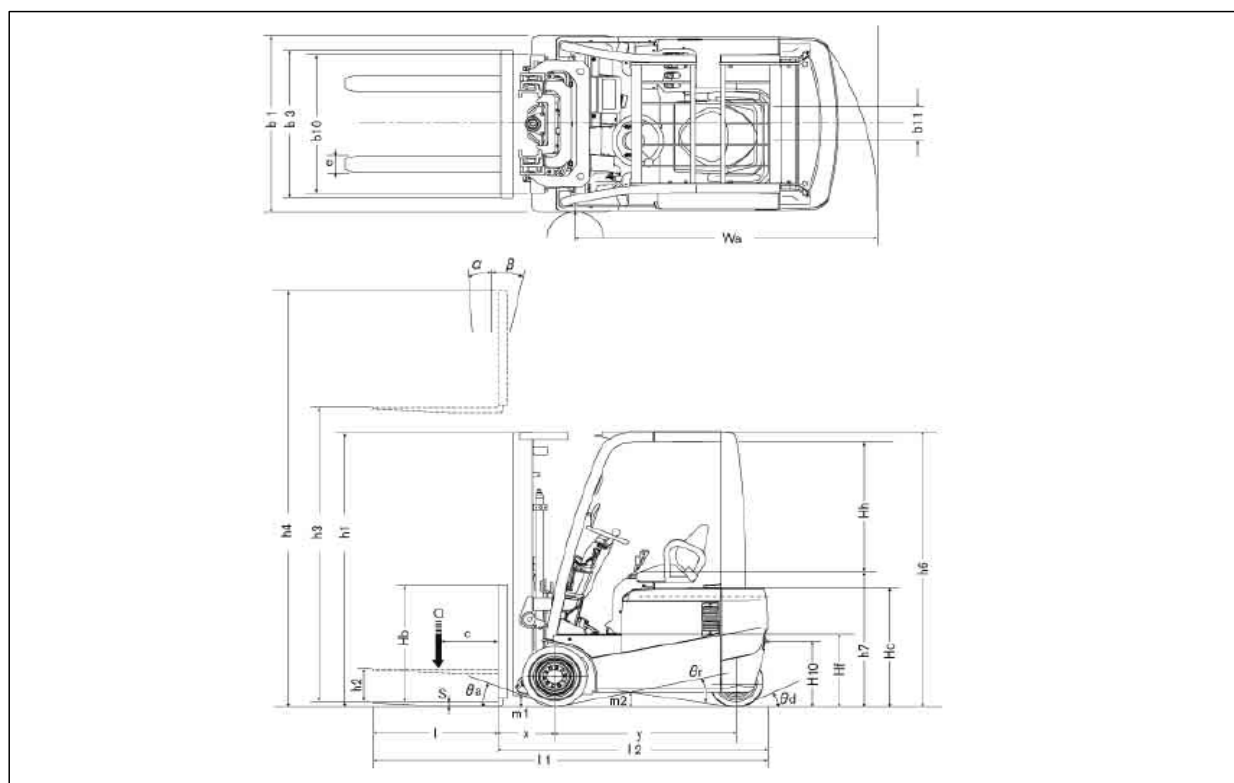
**TX**

**1.25**



**2.0 ton  
at 500 mm  
Load Center**

## Dimensions



## Mast Specifications & Rated Capacities

### TX-13 (AS1N1L13Q)

Mast type	Mast name	Max. fork height mm *1	Overall height			Free lift		Front overhang *2			Tilt angle Forward/ backward deg	Load capacity *3 Load center 500 mm 1.25 ton kg *1
			Fully lowered mm *1	Fully extended		Without backrest mm *1	With STD backrest mm *1	STD Fork 13-16t mm	Hook On S/S 13-16t mm	Integral S/S 13-16t mm		
				Without backrest mm *1	With STD backrest mm *1							
Two stage (Wide view 2W)	2W270	2700	1805	3335	3645	95	95	365	425	400	4/6	1250
	2W300	3000	1955	3635	3945							1250
	2W330	3300	2105	3935	4245							1250
	2W350	3500	2240	4135	4445							1250
	2W370	3700	2365	4335	4645							1250
	2W400	4000	2555	4635	4945							1250
	2W450	4500	2805	5135	5445							1150
2W500	5000	3055	5635	5945	1100							
Two stage (Full free 2F)	2F270	2700	1805	3335	3645	1205	895	360	420	395	4/6	1250
	2F300	3000	1955	3635	3945	1355	1045					1250
	2F330	3300	2105	3935	4245	1505	1195					1250
	2F350	3500	2240	4135	4445	1640	1330					1250
	2F370	3700	2365	4335	4645	1765	1455					1250
	2F400	4000	2555	4635	4945	1955	1645					1200
Three stage (Full free 3F)	3F385	3850	1805	4485	4795	1205	895	380	440	415	5/5	1200
	3F430	4300	1955	4935	5245	1355	1045					1150
	3F475	4750	2105	5385	5695	1505	1195					1050
	3F515	5150	2240	5785	6100	1640	1330					950
	3F550	5500	2365	6135	6445	1765	1455					950
	3F600	6000	2555	6635	6945	1955	1645					800
	3F650	6500	2805	7135	7445	2205	1895					550
	3F700	7000	3055	7635	7945	2455	2145					350
Three stage (Opti view 3V)	3V360	3600	1805	4275	4510	1165	930	435	495	470	5/5	1150
	3V405	4050	1955	4725	4960	1315	1080					1100
	3V450	4500	2105	5175	5410	1465	1230					1050
	3V490	4900	2240	5580	5810	1595	1365					950
	3V525	5250	2365	5925	6160	1725	1490					950
	3V575	5750	2555	6425	6660	1915	1680					800
	3V633	6330	2805	7005	7240	2165	1930					550
	3V688	6880	3055	7555	7790	2415	2180					350

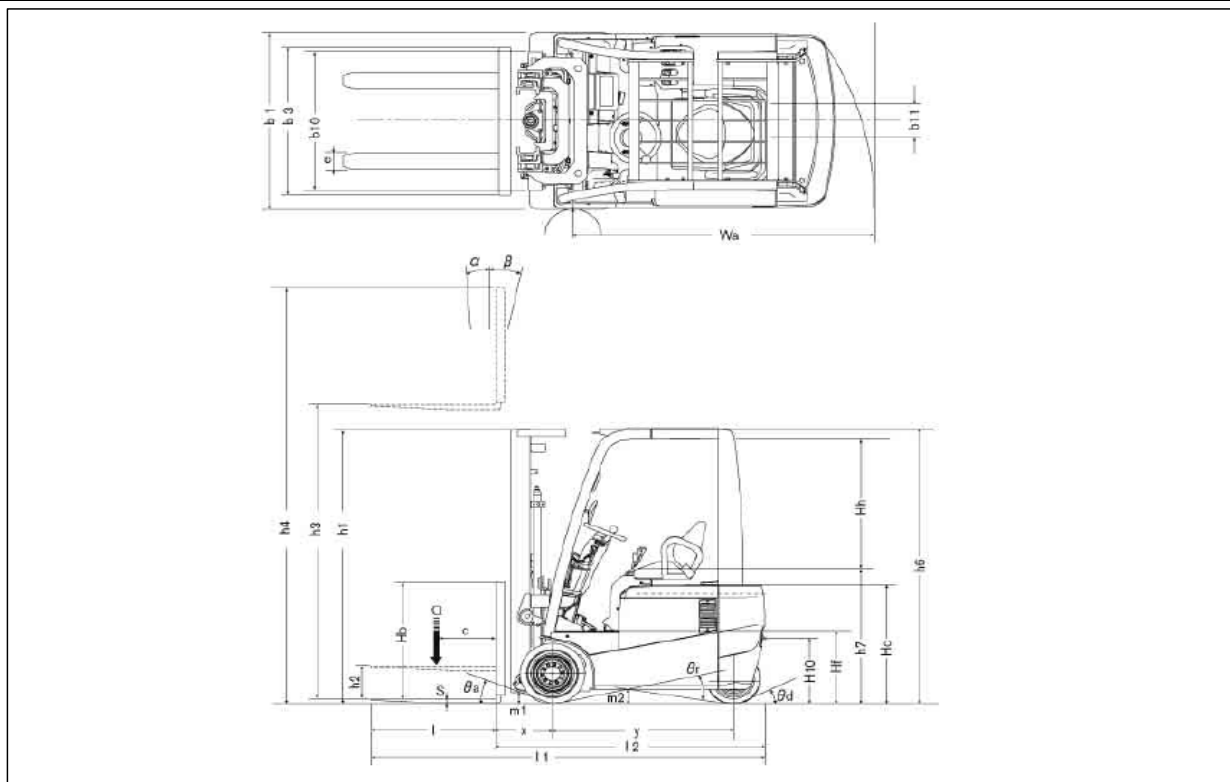
\*1: 1 inch=2.54mm 1kg=0.4536lb, \*2: With standard fork, \*3: With super elastic tire

## Main Truck Specifications

		Item		TX-13
DESIGNATION	1.1	Manufacturer		UNICARRIERS
	1.2	Model name		AS1N1L13Q
	1.3	Power unit: battery, diesel, petrol, LP gas, manpower		Battery
	1.4	Operation: manual, pedestrian, stand on, driver seated, order picker		driver seated
	1.5	Load capacity	Q (t)	1.25
	1.6	Load center	c (mm)	500
	1.8	Front overhang	x (mm)	365
	1.9	Wheel base	y (mm)	1195
	WEIGHT	2.1	Service weight	kg
2.2		Axle load with load, front/rear	kg	3530 / 450
2.3		Axle load without load, front/rear	kg	1370 / 1360
TIRES, CHASSIS	3.1	Tires, front/rear (C=cushion, SE=super elastic)		SE (C) / SE (C)
	3.2	Tire size, front		18x7-8
	3.3	Tire size, rear		15x4.5-8
	3.5	Wheels, number front/rear (x=driven)		2x / 2
	3.6	Tread, front *1	b10(mm)	913 (930)
	3.7	Tread, rear	b11(mm)	176
	DIMENSIONS	4.1	Mast tilt angle	$\alpha/\beta$ (°)
4.2		Standard mast height, fully lowered	h1 (mm)	1955
4.3		Standard mast free lift	h2 (mm)	95
4.4		Standard mast lift height	h3 (mm)	3000
4.5		Standard mast height, fully extended	h4 (mm)	3945
4.7		Overhead guard height	h6 (mm)	2110
4.8		Height of seat/stand on platform	h7 (mm)	957
4.12		Towing coupler height	h10 (mm)	495
4.19		Overall length	l1 (mm)	2685
4.20		Length to fork face	l2 (mm)	1785
4.21		Overall width *1	b1(mm)	1070 (1105)
4.22		Fork dimensions	s/e/l (mm)	35x100x900
4.23		Fork carriage according to DIN 15173, class / form A,B		2A
4.24		Carriage width	b3 (mm)	920
4.31		Ground clearance, mast	m1 (mm)	75
4.32		Ground clearance, centre of wheel base	m2 (mm)	100
4.33		Right angle stacking aisle with pallet 1000 x 1200 across forks	Ast (mm)	3110
4.34		Right angle stacking aisle with pallet 800 x 1200 across forks	Ast (mm)	2930
4.35		Turning radius	Wa (mm)	1420
PERFORMANCE		5.1	Travel speed, with/without load	km/h
	5.2	Lifting speed with/without load	m/s	0.33 / 0.5
	5.3	Lowering speed with/without load	m/s	0.5 / 0.5
	5.5	Maximum drawbar pull, with/without load, 3 minutes rating	kN	10500
	5.7	Maximum gradeability, with/without load, 5 minutes rating	%	24.1 / 34.8
	5.9	Acceleration with/without load (0-10m)	s	4.6 / 4.2
	5.10	Service brake		Hydraulic/Electric
DRIVE	6.1	Traction motor performance, 60 minutes rating	kW	7.1 x2
	6.2	Lift motor performance, 20% rating	kW	14.5
	6.3	Battery according DIN 43531/35/36 A, B, C., no		DIN 43531A
	6.4	Battery voltage/rated capacity (5h)	V/Ah	48V / 375Ah
	6.5	Battery weight ( $\pm 5\%$ )	kg	520-765
	6.6	Energy consumption in accordance with VDI-cycle	kWh/h	—
OTHERS	8.1	Type of drive motor control		MOS FET Inverter
	8.2	Working pressure attachments	MPa	12
	8.4	Noise level at operator's ear according to EN 12053	dB(A)	—
	8.5	Towing coupler, design/type DIN, no		—

\*1: Figure in brackets refer to cushion tires.

## Dimensions



## Mast Specifications & Rated Capacities

TX-15 (AS1N1L15Q / A1N1L15Q)

Mast type	Mast name	Max. fork height mm *1	Overall height			Free lift		Front overhang *2			Tilt angle Forward/ backward deg	Load capacity *3 Load center 500 mm 1.5 ton kg *1
			Fully lowered mm *1	Fully extended		Without backrest mm *1	With STD backrest mm *1	STD Fork 13-16t mm *1	Hook On S/S 13-16t mm *1	Integral S/S 13-16t mm *1		
				Without backrest mm *1	With STD backrest mm *1							
Two stage (Wide view 2W)	2W270	2700	1805	3335	3645	95	95	365	425	400	4/6	1500
	2W300	3000	1955	3635	3945							1500
	2W330	3300	2105	3935	4245							1500
	2W350	3500	2240	4135	4445							1500
	2W370	3700	2365	4335	4645							1500
	2W400	4000	2555	4635	4945							1500
	2W450	4500	2805	5135	5445							1450
2W500	5000	3055	5635	5945	1400							
Two stage (Full free 2F)	2F270	2700	1805	3335	3645	1205	895	360	420	395	4/6	1500
	2F300	3000	1955	3635	3945	1355	1045					1500
	2F330	3300	2105	3935	4245	1505	1195					1500
	2F350	3500	2240	4135	4445	1640	1330					1500
	2F370	3700	2365	4335	4645	1765	1455					1500
	2F400	4000	2555	4635	4945	1955	1645					1500
Three stage (Full free 3F)	3F385	3850	1805	4485	4795	1205	895	380	440	415	5/5	1500
	3F430	4300	1955	4935	5245	1355	1045					1450
	3F475	4750	2105	5385	5695	1505	1195					1400
	3F515	5150	2240	5785	6100	1640	1330					1300
	3F550	5500	2365	6135	6445	1765	1455					1200
	3F600	6000	2555	6635	6945	1955	1645					900
	3F650	6500	2805	7135	7445	2205	1895					700 / 750 *4
	3F700	7000	3055	7635	7945	2455	2145					500 / 550 *4
Three stage (Opti view 3V)	3V360	3600	1805	4275	4510	1165	930	435	495	470	5/5	1400
	3V405	4050	1955	4725	4960	1315	1080					1350
	3V450	4500	2105	5175	5410	1465	1230					1300
	3V490	4900	2240	5580	5810	1595	1365					1250
	3V525	5250	2365	5925	6160	1725	1490					1200
	3V575	5750	2555	6425	6660	1915	1680					900
	3V633	6330	2805	7005	7240	2165	1930					700 / 750 *4
	3V688	6880	3055	7555	7790	2415	2180					500 / 550 *4

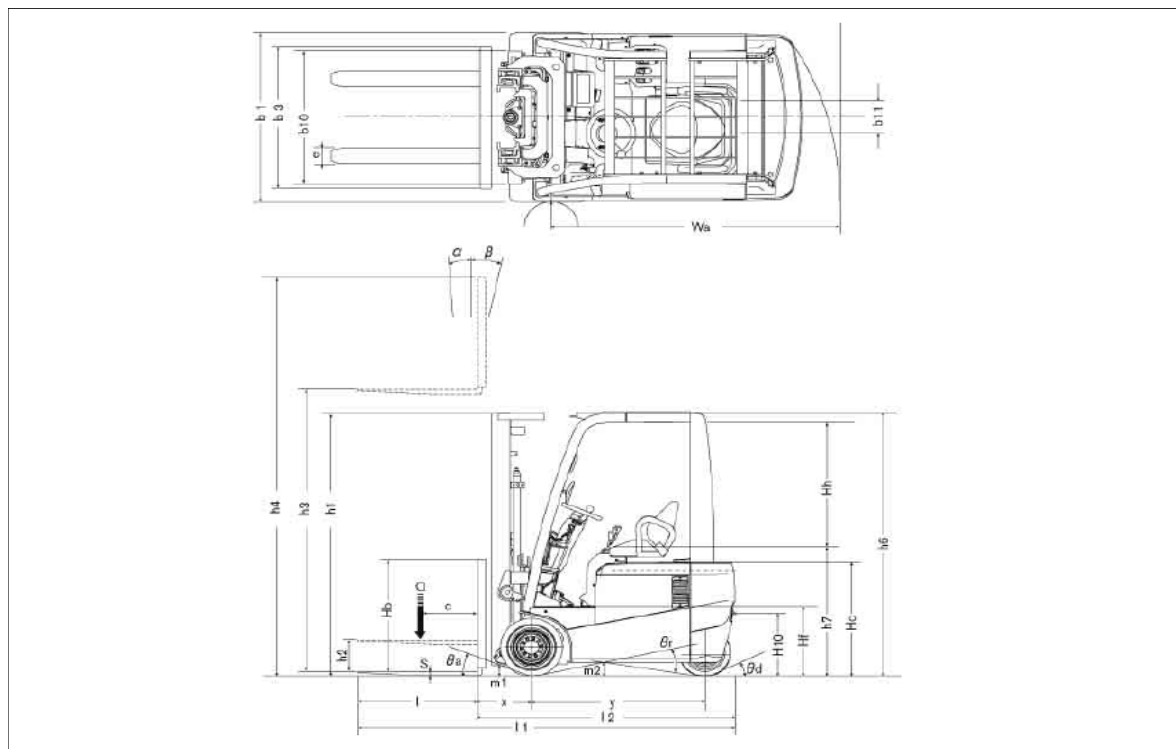
\*1: 1 inch=2.54mm 1kg=0.4536lb, \*2: With standard fork, \*3: With super elastic tire, \*4: Load capacity of A1N1L15Q

## Main Truck Specifications

Item			TX-15		
DESIGNATION	1.1	Manufacturer		UNICARRIERS	UNICARRIERS
	1.2	Model name		AS1N1L15Q	A1N1L15Q
	1.3	Power unit: battery, diesel, petrol, LP gas, manpower		Battery	Battery
	1.4	Operation: manual, pedestrian, stand on, driver seated, order picker		driver seated	driver seated
	1.5	Load capacity	Q (t)	1.5	1.5
	1.6	Load center	c (mm)	500	500
	1.8	Front overhang	x (mm)	365	365
	1.9	Wheel base	y (mm)	1195	1300
	WEIGHT	2.1	Service weight	kg	3020
2.2		Axle load with load, front/rear	kg	3995 / 525	3955 / 465
2.3		Axle load without load, front/rear	kg	1405 / 1615	1455 / 1465
TIRES, CHASSIS	3.1	Tires, front/rear (C=cushion, SE=super elastic)		SE (C) / SE (C)	SE (C) / SE (C)
	3.2	Tire size, front		18x7-8	18x7-8
	3.3	Tire size, rear		140/55-9	15x4.5-8
	3.5	Wheels, number front/rear (x=driven)		2x / 2	2x / 2
	3.6	Tread, front *1	b10(mm)	913 (930)	913 (930)
	3.7	Tread, rear	b11(mm)	176	176
DIMENSIONS	4.1	Mast tilt angle	$\alpha/\beta$ (°)	4 / 6	4 / 6
	4.2	Standard mast height, fully lowered	h1 (mm)	1955	1955
	4.3	Standard mast free lift	h2 (mm)	95	95
	4.4	Standard mast lift height	h3 (mm)	3000	3000
	4.5	Standard mast height, fully extended	h4 (mm)	3945	3945
	4.7	Overhead guard height	h6 (mm)	2110	2110
	4.8	Height of seat/stand on platform	h7 (mm)	957	957
	4.12	Towing coupler height	h10 (mm)	495	495
	4.19	Overall length	l1 (mm)	2685	2790
	4.20	Length to fork face	l2 (mm)	1785	1890
	4.21	Overall width *1	b1(mm)	1070 (1105)	1070 (1105)
	4.22	Fork dimensions	s/e/l (mm)	35x100x900	35x100x900
	4.23	Fork carriage according to DIN 15173, class / form A,B		2A	2A
	4.24	Carriage width	b3 (mm)	920	920
	4.31	Ground clearance, mast	m1 (mm)	75	75
	4.32	Ground clearance, centre of wheel base	m2 (mm)	100	100
	4.33	Right angle stacking aisle with pallet 1000 x 1200 across forks	Ast (mm)	3110	3215
	4.34	Right angle stacking aisle with pallet 800 x 1200 across forks	Ast (mm)	2930	3035
	4.35	Turning radius	Wa (mm)	1420	1525
PERFORMANCE	5.1	Travel speed, with/without load	km/h	13.5 / 13.5	13.5 / 13.5
	5.2	Lifting speed with/without load	m/s	0.3 / 0.5	0.3 / 0.5
	5.3	Lowering speed with/without load	m/s	0.5 / 0.5	0.5 / 0.5
	5.5	Maximum drawbar pull, with/without load, 3 minutes rating	kN	10500	10500
	5.7	Maximum gradeability, with/without load, 5 minutes rating	%	20.8 / 30.9	21.3 / 31.2
	5.9	Acceleration with/without load (0-10m)	s	4.8 / 4.3	4.8 / 4.3
	5.10	Service brake		Hydraulic/Electric	Hydraulic/Electric
DRIVE	6.1	Traction motor performance, 60 minutes rating	kW	7.1 x2	7.1 x2
	6.2	Lift motor performance, 20% rating	kW	14.5	14.5
	6.3	Battery according DIN 43531/35/36 A, B, C, no		DIN 43531A	DIN 43531A
	6.4	Battery voltage/rated capacity (5h)	V/Ah	48V / 430Ah	48V / 460Ah
	6.5	Battery weight ( $\pm 5\%$ )	kg	650-765	675-900
	6.6	Energy consumption in accordance with VDI-cycle	kWh/h	—	—
OTHERS	8.1	Type of drive motor control		MOS FET Inverter	MOS FET Inverter
	8.2	Working pressure attachments	MPa	12	12
	8.4	Noise level at operator's ear according to EN 12053	dB(A)	—	—
	8.5	Towing coupler, design/type DIN, no		—	—

\*1: Figure in brackets refer to cushion tires.

## Dimensions



## Mast Specifications & Rated Capacities

TX-16 (AG1N1L16Q)

Mast type	Mast name	Max. fork height mm *1	Overall height			Free lift		Front overhang *2			Tilt angle Forward/ backward deg	Load capacity *3 Load center 500 mm 1.6 ton kg *1
			Fully lowered mm *1	Fully extended		Without backrest mm *1	With STD backrest mm *1	STD Fork 13-16t mm *1	Hook On S/S 13-16t mm *1	Integral S/S 13-16t mm *1		
				Without backrest mm *1	With STD backrest mm *1							
Two stage (Wide view 2W)	2W270	2700	1805	3335	3645	95	95	365	425	400	4/6	1600
	2W300	3000	1955	3635	3945							1600
	2W330	3300	2105	3935	4245							1600
	2W350	3500	2240	4135	4445							1600
	2W370	3700	2365	4335	4645							1600
	2W400	4000	2555	4635	4945							1600
	2W450	4500	2805	5135	5445							1500
2W500	5000	3055	5635	5945	1450							
Two stage (Full free 2F)	2F270	2700	1805	3335	3645	1205	895	360	420	395	4/6	1600
	2F300	3000	1955	3635	3945	1355	1045					1600
	2F330	3300	2105	3935	4245	1505	1195					1600
	2F350	3500	2240	4135	4445	1640	1330					1600
	2F370	3700	2365	4335	4645	1765	1455					1600
	2F400	4000	2555	4635	4945	1955	1645					1550
Three stage (Full free 3F)	3F385	3850	1805	4485	4795	1205	895	380	440	415	5/5	1550
	3F430	4300	1955	4935	5245	1355	1045					1500
	3F475	4750	2105	5385	5695	1505	1195					1450
	3F515	5150	2240	5785	6100	1640	1330					1350
	3F550	5500	2365	6135	6445	1765	1455					1300
	3F600	6000	2555	6635	6945	1955	1645					1250
	3F650	6500	2805	7135	7445	2205	1895					1150
	3F700	7000	3055	7635	7945	2455	2145					1100
Three stage (Opti view 3V)	3V360	3600	1805	4275	4510	1165	930	435	495	470	5/5	1550
	3V405	4050	1955	4725	4960	1315	1080					1500
	3V450	4500	2105	5175	5410	1465	1230					1450
	3V490	4900	2240	5580	5810	1595	1365					1350
	3V525	5250	2365	5925	6160	1725	1490					1300
	3V575	5750	2555	6425	6660	1915	1680					1250
	3V633	6330	2805	7005	7240	2165	1930					1150
	3V688	6880	3055	7555	7790	2415	2180					1100

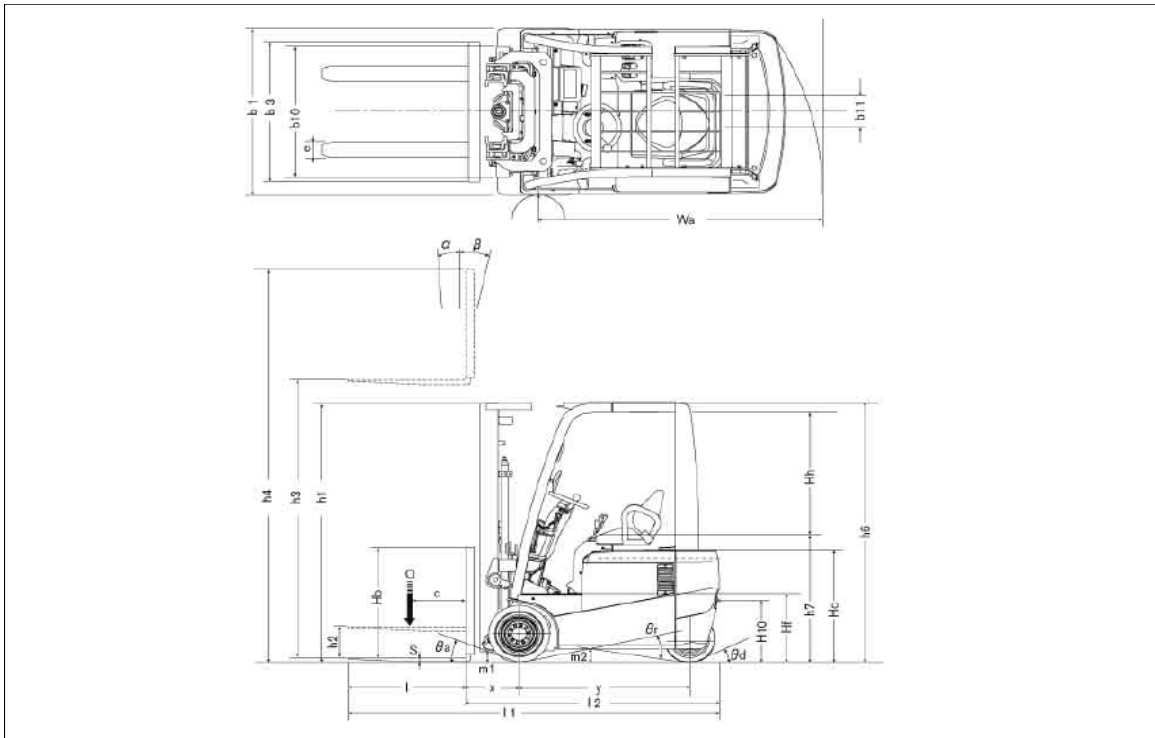
\*1: 1 inch=2.54mm 1kg=0.4536lb, \*2: With standard fork, \*3: With super elastic tire

## Main Truck Specifications

		Item	TX-16
DESIGNATION	1.1	Manufacturer	UNICARRIERS
	1.2	Model name	AG1N1L16Q
	1.3	Power unit: battery, diesel, petrol, LP gas, manpower	Battery
	1.4	Operation: manual, pedestrian, stand on, driver seated, order picker	driver seated
	1.5	Load capacity	Q (t) 1.6
	1.6	Load center	c (mm) 500
	1.8	Front overhang	x (mm) 365
	1.9	Wheel base	y (mm) 1410
	WEIGHT	2.1	Service weight
2.2		Axle load with load, front/rear	kg 4160 / 500
2.3		Axle load without load, front/rear	kg 1575 / 1485
TIRES, CHASSIS	3.1	Tires, front/rear (C=cushion, SE=super elastic)	SE (C) / SE (C)
	3.2	Tire size, front	18x7-8
	3.3	Tire size, rear	140/55-9
	3.5	Wheels, number front/rear (x=driven)	2x / 2
	3.6	Tread, front *1	b10(mm) 933 (930)
	3.7	Tread, rear	b11(mm) 176
	DIMENSIONS	4.1	Mast tilt angle
4.2		Standard mast height, fully lowered	h1 (mm) 1955
4.3		Standard mast free lift	h2 (mm) 95
4.4		Standard mast lift height	h3 (mm) 3000
4.5		Standard mast height, fully extended	h4 (mm) 3945
4.7		Overhead guard height	h6 (mm) 2110
4.8		Height of seat/stand on platform	h7 (mm) 957
4.12		Towing coupler height	h10 (mm) 495
4.19		Overall length	l1 (mm) 2900
4.20		Length to fork face	l2 (mm) 2000
4.21		Overall width *1	b1(mm) 1090 (1105)
4.22		Fork dimensions	s/e/l (mm) 35x100x900
4.23		Fork carriage according to DIN 15173, class / form A,B	2A
4.24		Carriage width	b3 (mm) 920
4.31		Ground clearance, mast	m1 (mm) 75
4.32		Ground clearance, centre of wheel base	m2 (mm) 100
4.33		Right angle stacking aisle with pallet 1000 x 1200 across forks	Ast (mm) 3325
4.34		Right angle stacking aisle with pallet 800 x 1200 across forks	Ast (mm) 3145
4.35		Turning radius	Wa (mm) 1638
PERFORMANCE		5.1	Travel speed, with/without load
	5.2	Lifting speed with/without load	m/s 0.4 / 0.6
	5.3	Lowering speed with/without load	m/s 0.5 / 0.5
	5.5	Maximum drawbar pull, with/without load, 3 minutes rating	kN 10500
	5.7	Maximum gradeability, with/without load, 5 minutes rating	% 20.4 / 30.4
	5.9	Acceleration with/without load (0-10m)	s 4.4 / 4.0
	5.10	Service brake	Hydraulic/Electric
DRIVE	6.1	Traction motor performance, 60 minutes rating	kW 7.1 x2
	6.2	Lift motor performance, 20% rating	kW 14.6
	6.3	Battery according DIN 43531/35/36 A, B, C., no	DIN 43531A
	6.4	Battery voltage/rated capacity (5h)	V/Ah 48V / 625Ah
	6.5	Battery weight ( $\pm 5\%$ )	kg 900-1150
	6.6	Energy consumption in accordance with VDI-cycle	kWh/h —
OTHERS	8.1	Type of drive motor control	MOS FET Inverter
	8.2	Working pressure attachments	MPa 12
	8.4	Noise level at operator's ear according to EN 12053	dB(A) —
	8.5	Towing coupler, design/type DIN, no	—

\*1: Figure in brackets refer to cushion tires.

## Dimensions



## Mast Specifications & Rated Capacities

TX-18 (A1N1L18Q, AG1N1L18Q)

Mast type	Mast name	Max. fork height mm *1	Overall height			Free lift		Front overhang *2			Tilt angle Forward/ backward deg	Load capacity *3	
			Fully lowered mm *1	Fully extended		Without backrest mm *1	With STD backrest mm *1	STD Fork 18-20t mm *1	Hook On S/S 18-20t mm *1	Integral S/S 18-20t mm *1		Load center 500 mm	
				Without backrest mm *1	With STD backrest mm *1						1.75 ton kg *1	1.8 ton kg *1	
Two stage (Wide view 2W)	2W270	2700	1805	3335	3645	100	100	370	430	405	4/6	1750	1800
	2W300	3000	1955	3635	3945							1750	1800
	2W330	3300	2105	3935	4245							1750	1800
	2W350	3500	2240	4135	4445							1750	1800
	2W370	3700	2365	4335	4645							1750	1800
	2W400	4000	2555	4635	4945							1700	1750
	2W450	4500	2805	5135	5445							1600	1650
2W500	5000	3055	5635	5945	1500	1550							
Two stage (Full free 2F)	2F270	2700	1805	3335	3645	1210	900	365	425	400	4/6	1750	1800
	2F300	3000	1955	3635	3945	1360	1050					1750	1800
	2F330	3300	2105	3935	4245	1510	1200					1750	1800
	2F350	3500	2240	4135	4445	1645	1335					1750	1800
	2F370	3700	2365	4335	4645	1770	1460					1700	1750
	2F400	4000	2555	4635	4945	1960	1650					1650	1700
Three stage (Full free 3F)	3F385	3850	1805	4485	4795	1210	900	385	445	420	5/5	1650	1700
	3F430	4300	1955	4935	5245	1360	1050					1600	1650
	3F475	4750	2105	5385	5695	1510	1200					1550	1600
	3F515	5150	2240	5785	6100	1645	1335					1450	1500
	3F550	5500	2365	6135	6445	1770	1460					1250	1400
	3F600	6000	2555	6635	6945	1960	1650					950	1350
	3F650	6500	2805	7135	7445	2210	1900					—	1300
	3F700	7000	3055	7635	7945	2460	2150					—	1200
Three stage (Opti view 3V)	3V360	3600	1805	4275	4510	1170	935	440	500	475	5/5	1500	1700
	3V405	4050	1955	4725	4960	1320	1085					1500	1650
	3V450	4500	2105	5175	5410	1470	1235					1500	1600
	3V490	4900	2240	5580	5810	1600	1370					1450	1500
	3V525	5250	2365	5925	6160	1730	1495					1250	1400
	3V575	5750	2555	6425	6660	1920	1685					950	1300
	3V633	6330	2805	7005	7240	2170	1935					—	1200
	3V688	6880	3055	7555	7790	2420	2185					—	1150

\*1: 1 inch=2.54mm 1kg=0.4536lb, \*2: With standard fork, \*3: With super elastic tire



## Main Truck Specifications

Item			TX-18		
DESIGNATION	1.1	Manufacturer		UNICARRIERS	UNICARRIERS
	1.2	Model name		A1N1L18Q	AG1N1L18Q
	1.3	Power unit: battery, diesel, petrol, LP gas, manpower		Battery	Battery
	1.4	Operation: manual, pedestrian, stand on, driver seated, order picker		driver seated	driver seated
	1.5	Load capacity	Q (t)	1.75	1.8
	1.6	Load center	c (mm)	500	500
	1.8	Front overhang	x (mm)	370	370
	1.9	Wheel base	y (mm)	1300	1410
	WEIGHT	2.1	Service weight	kg	3120
2.2		Axle load with load, front/rear	kg	4390 / 480	4590 / 470
2.3		Axle load without load, front/rear	kg	1465 / 1655	1675 / 1585
TIRES, CHASSIS	3.1	Tires, front/rear (C=cushion, SE=super elastic)		SE (C) / SE (C)	SE (C) / SE (C)
	3.2	Tire size, front		18x7-8	200/50-10
	3.3	Tire size, rear		140/55-9	140/55-9
	3.5	Wheels, number front/rear (x=driven)		2x / 2	2x / 2
	3.6	Tread, front *1	b10(mm)	913 (930)	930 (930)
	3.7	Tread, rear	b11(mm)	176	176
DIMENSIONS	4.1	Mast tilt angle	$\alpha/\beta$ (°)	4 / 6	4 / 6
	4.2	Standard mast height, fully lowered	h1 (mm)	1955	1955
	4.3	Standard mast free lift	h2 (mm)	100	100
	4.4	Standard mast lift height	h3 (mm)	3000	3000
	4.5	Standard mast height, fully extended	h4 (mm)	3945	3945
	4.7	Overhead guard height	h6 (mm)	2110	2110
	4.8	Height of seat/stand on platform	h7 (mm)	957	957
	4.12	Towing coupler height	h10 (mm)	495	495
	4.19	Overall length	l1 (mm)	2795	2905
	4.20	Length to fork face	l2 (mm)	1895	2005
	4.21	Overall width *1	b1(mm)	1070 (1105)	1120 (1105)
	4.22	Fork dimensions	s/e/l (mm)	40x100x900	40x100x900
	4.23	Fork carriage according to DIN 15173, class / form A,B		2A	2A
	4.24	Carriage width	b3 (mm)	920	920
	4.31	Ground clearance, mast	m1 (mm)	75	75
	4.32	Ground clearance, centre of wheel base	m2 (mm)	100	100
	4.33	Right angle stacking aisle with pallet 1000 x 1200 across forks	Ast (mm)	3215	3330
4.34	Right angle stacking aisle with pallet 800 x 1200 across forks	Ast (mm)	3035	3150	
4.35	Turning radius	Wa (mm)	1525	1635	
PERFORMANCE	5.1	Travel speed, with/without load	km/h	13.5 / 13.5	15.0 / 16.0
	5.2	Lifting speed with/without load	m/s	0.27 / 0.5	0.37 / 0.6
	5.3	Lowering speed with/without load	m/s	0.5 / 0.5	0.5 / 0.5
	5.5	Maximum drawbar pull, with/without load, 3 minutes rating	kN	10500	10500
	5.7	Maximum gradeability, with/without load, 5 minutes rating	%	19.1 / 29.6	17.9 / 27.8
	5.9	Acceleration with/without load (0-10m)	s	4.9 / 4.4	4.6 / 4.1
	5.10	Service brake		Hydraulic/Electric	Hydraulic/Electric
DRIVE	6.1	Traction motor performance, 60 minutes rating	kW	7.1 x2	7.1 x2
	6.2	Lift motor performance, 20% rating	kW	14.5	14.6
	6.3	Battery according DIN 43531/35/36 A, B, C, no		DIN 43531A	DIN 43531A
	6.4	Battery voltage/rated capacity (5h)	V/Ah	48V / 460Ah	48V / 750Ah
	6.5	Battery weight ( $\pm 5\%$ )	kg	675-900	1050-1150
	6.6	Energy consumption in accordance with VDI-cycle	kWh/h	—	—
OTHERS	8.1	Type of drive motor control		MOS FET Inverter	MOS FET Inverter
	8.2	Working pressure attachments	MPa	12	12
	8.4	Noise level at operator's ear according to EN 12053	dB(A)	—	—
	8.5	Towing coupler, design/type DIN, no		—	—

\*1: Figure in brackets refer to cushion tires.



## Main Truck Specifications

		Item	TX-20
DESIGNATION	1.1	Manufacturer	UNICARRIERS
	1.2	Model name	AG1N1L20Q
	1.3	Power unit: battery, diesel, petrol, LP gas, manpower	Battery
	1.4	Operation: manual, pedestrian, stand on, driver seated, order picker	driver seated
	1.5	Load capacity	Q (t) 2
	1.6	Load center	c (mm) 500
	1.8	Front overhang	x (mm) 370
	1.9	Wheel base	y (mm) 1410
	WEIGHT	2.1	Service weight
2.2		Axle load with load, front/rear	kg 4905 / 495
2.3		Axle load without load, front/rear	kg 1665 / 1735
TIRES, CHASSIS	3.1	Tires, front/rear (C=cushion, SE=super elastic)	SE (C) / SE (C)
	3.2	Tire size, front	200/50-10
	3.3	Tire size, rear	140/55-9
	3.5	Wheels, number front/rear (x=driven)	2x / 2
	3.6	Tread, front *1	b10(mm) 930 (930)
	3.7	Tread, rear	b11(mm) 176
	DIMENSIONS	4.1	Mast tilt angle
4.2		Standard mast height, fully lowered	h1 (mm) 1955
4.3		Standard mast free lift	h2 (mm) 100
4.4		Standard mast lift height	h3 (mm) 3000
4.5		Standard mast height, fully extended	h4 (mm) 3945
4.7		Overhead guard height	h6 (mm) 2110
4.8		Height of seat/stand on platform	h7 (mm) 957
4.12		Towing coupler height	h10 (mm) 495
4.19		Overall length	l1 (mm) 2905
4.20		Length to fork face	l2 (mm) 2005
4.21		Overall width *1	b1(mm) 1120 (1105)
4.22		Fork dimensions	s/e/l (mm) 40x100x900
4.23		Fork carriage according to DIN 15173, class / form A,B	2A
4.24		Carriage width	b3 (mm) 920
4.31		Ground clearance, mast	m1 (mm) 75
4.32		Ground clearance, centre of wheel base	m2 (mm) 100
4.33		Right angle stacking aisle with pallet 1000 x 1200 across forks	Ast (mm) 3330
4.34		Right angle stacking aisle with pallet 800 x 1200 across forks	Ast (mm) 3150
4.35		Turning radius	Wa (mm) 1635
PERFORMANCE		5.1	Travel speed, with/without load
	5.2	Lifting speed with/without load	m/s 0.35 / 0.58
	5.3	Lowering speed with/without load	m/s 0.5 / 0.5
	5.5	Maximum drawbar pull, with/without load, 3 minutes rating	kN 10500
	5.7	Maximum gradeability, with/without load, 5 minutes rating	% 16.1 / 25.6
	5.9	Acceleration with/without load (0-10m)	s 4.7 / 4.2
	5.10	Service brake	Hydraulic/Electric
DRIVE	6.1	Traction motor performance, 60 minutes rating	kW 7.1 x2
	6.2	Lift motor performance, 20% rating	kW 14.6
	6.3	Battery according DIN 43531/35/36 A, B, C, no	DIN 43531A
	6.4	Battery voltage/rated capacity (5h)	V/Ah 48V / 750Ah
	6.5	Battery weight ( $\pm 5\%$ )	kg 1050-1150
	6.6	Energy consumption in accordance with VDI-cycle	kWh/h —
OTHERS	8.1	Type of drive motor control	MOS FET Inverter
	8.2	Working pressure attachments	MPa 12
	8.4	Noise level at operator's ear according to EN 12053	dB(A) —
	8.5	Towing coupler, design/type DIN, no	—

\*1: Figure in brackets refer to cushion tires.

## Loading Capacity

TX-13 / AS1N1L13Q <FORK>

Unit: kg

Load center		500mm	600	700	800	900	1000	1100	1200	1300	1400	1500	
Mast name													
Super Elastic Tire	2W270	1250	1120	1015	925	855	790	735	690	650	610	580	
	2W300	1250	1120	1015	925	855	790	735	690	650	610	580	
	2W330	1250	1120	1015	925	855	790	735	690	650	610	580	
	2W350	1250	1120	1015	925	855	790	735	690	650	610	580	
	2W370	1250	1120	1015	925	855	790	735	690	650	610	580	
	2W400	1250	1120	1015	925	855	790	735	690	650	610	580	
	2W450	1150	1030	930	850	785	725	675	635	595	560	530	
	2W500	1100	985	890	815	750	695	650	605	570	540	510	
	2F270	1250	1120	1010	925	850	790	735	685	645	610	575	
	2F300	1250	1120	1010	925	850	790	735	685	645	610	575	
	2F330	1250	1120	1010	925	850	790	735	685	645	610	575	
	2F350	1250	1120	1010	925	850	790	735	685	645	610	575	
	2F370	1250	1120	1010	925	850	790	735	685	645	610	575	
	2F400	1200	1075	970	890	815	755	705	660	620	585	555	
	3F385	1200	1075	975	890	825	765	710	665	625	590	560	
	3F430	1150	1030	935	855	790	730	680	640	600	565	535	
	3F475	1050	940	855	780	720	665	620	580	550	515	490	
	3F515	950	850	770	705	650	605	560	525	495	465	440	
	3F550	950	850	770	705	650	605	560	525	495	465	440	
	3F600	800	715	650	595	550	510	475	445	415	395	370	
	3F650	550	490	445	410	375	350	325	305	285	270	255	
	3F700	350	310	285	260	240	220	205	190	180	170	160	
	3V360	1150	1035	945	870	805	745	700	655	620	585	555	
	3V405	1100	990	905	830	770	715	670	625	590	560	530	
	3V450	1050	945	865	795	735	680	635	600	565	535	505	
	3V490	950	855	780	715	665	615	575	540	510	480	455	
	3V525	950	855	780	715	665	615	575	540	510	480	455	
	3V575	800	720	655	605	560	520	485	455	430	405	385	
	3V633	550	495	450	415	385	355	335	310	295	280	265	
	3V688	350	315	285	265	245	225	210	200	185	175	165	
	Cushion Tire	2W270	1250	1120	1015	925	855	790	735	690	650	610	580
		2W300	1250	1120	1015	925	855	790	735	690	650	610	580
2W330		1250	1120	1015	925	855	790	735	690	650	610	580	
2W350		1250	1120	1015	925	855	790	735	690	650	610	580	
2W370		1250	1120	1015	925	855	790	735	690	650	610	580	
2W400		1250	1120	1015	925	855	790	735	690	650	610	580	
2W450		1200	1075	975	890	820	760	705	660	620	585	555	
2W500		1150	1030	930	850	785	725	675	635	595	560	530	
2F270		1250	1120	1010	925	850	790	735	685	645	610	575	
2F300		1250	1120	1010	925	850	790	735	685	645	610	575	
2F330		1250	1120	1010	925	850	790	735	685	645	610	575	
2F350		1250	1120	1010	925	850	790	735	685	645	610	575	
2F370		1250	1120	1010	925	850	790	735	685	645	610	575	
2F400		1250	1120	1010	925	850	790	735	685	645	610	575	
3F385		1200	1075	975	890	825	765	710	665	625	590	560	
3F430		1200	1075	975	890	825	765	710	665	625	590	560	
3F475		1150	1030	935	855	790	730	680	640	600	565	535	
3F515		1100	985	895	820	755	700	650	610	575	540	510	
3F550		1050	940	855	780	720	665	620	580	550	515	490	
3F600		1000	895	810	745	685	635	590	555	520	490	465	
3F650		850	760	690	630	580	540	505	470	445	420	395	
3F700		600	535	485	445	410	380	355	330	310	295	280	
3V360		1150	1035	945	870	805	745	700	655	620	585	555	
3V405		1100	990	905	830	770	715	670	625	590	560	530	
3V450		1100	990	905	830	770	715	670	625	590	560	530	
3V490		1050	945	865	795	735	680	635	600	565	535	505	
3V525		1000	900	820	755	700	650	605	570	535	505	480	
3V575		950	855	780	715	665	615	575	540	510	480	455	
3V633		850	765	700	640	595	550	515	485	455	430	410	
3V688		600	540	490	450	420	390	365	340	320	305	290	

TX-15 / AS1N1L15Q <FORK>

Unit: kg

Load center		500mm	600	700	800	900	1000	1100	1200	1300	1400	1500	
Mast name													
Super Elastic Tire	2W270	1500	1345	1215	1110	1025	950	885	830	780	735	695	
	2W300	1500	1345	1215	1110	1025	950	885	830	780	735	695	
	2W330	1500	1345	1215	1110	1025	950	885	830	780	735	695	
	2W350	1500	1345	1215	1110	1025	950	885	830	780	735	695	
	2W370	1500	1345	1215	1110	1025	950	885	830	780	735	695	
	2W400	1500	1345	1215	1110	1025	950	885	830	780	735	695	
	2W450	1450	1300	1175	1075	990	920	855	800	750	710	670	
	2W500	1400	1255	1135	1040	955	885	825	775	725	685	650	
	2F270	1500	1340	1215	1110	1020	945	880	825	775	730	690	
	2F300	1500	1340	1215	1110	1020	945	880	825	775	730	690	
	2F330	1500	1340	1215	1110	1020	945	880	825	775	730	690	
	2F350	1500	1340	1215	1110	1020	945	880	825	775	730	690	
	2F370	1500	1340	1215	1110	1020	945	880	825	775	730	690	
	2F400	1500	1340	1215	1110	1020	945	880	825	775	730	690	
	3F385	1500	1345	1220	1115	1030	955	890	835	785	740	700	
	3F430	1450	1300	1180	1080	995	920	860	805	755	715	675	
	3F475	1400	1255	1140	1040	960	890	830	775	730	690	655	
	3F515	1300	1165	1055	965	890	825	770	720	680	640	605	
	3F550	1200	1075	975	890	825	765	710	665	625	590	560	
	3F600	900	805	730	670	615	570	535	500	470	440	420	
	3F650	700	625	570	520	480	445	415	385	365	345	325	
	3F700	500	445	405	370	340	315	295	275	260	245	230	
	3V360	1400	1260	1150	1060	980	910	850	800	750	710	675	
	3V405	1350	1215	1110	1020	945	875	820	770	725	685	650	
	3V450	1300	1170	1070	980	910	845	790	740	700	660	625	
	3V490	1250	1125	1025	945	875	810	760	715	670	635	600	
	3V525	1200	1080	985	905	840	780	730	685	645	610	580	
	3V575	900	810	740	680	630	585	545	510	485	455	435	
	3V633	700	630	575	530	490	455	425	400	375	355	335	
	3V688	500	450	410	375	350	325	300	285	265	250	240	
	Cushion Tire	2W270	1500	1345	1215	1110	1025	950	885	830	780	735	695
		2W300	1500	1345	1215	1110	1025	950	885	830	780	735	695
		2W330	1500	1345	1215	1110	1025	950	885	830	780	735	695
2W350		1500	1345	1215	1110	1025	950	885	830	780	735	695	
2W370		1500	1345	1215	1110	1025	950	885	830	780	735	695	
2W400		1500	1345	1215	1110	1025	950	885	830	780	735	695	
2W450		1450	1300	1175	1075	990	920	855	800	750	710	670	
2W500		1400	1255	1135	1040	955	885	825	775	725	685	650	
2F270		1500	1340	1215	1110	1020	945	880	825	775	730	690	
2F300		1500	1340	1215	1110	1020	945	880	825	775	730	690	
2F330		1500	1340	1215	1110	1020	945	880	825	775	730	690	
2F350		1500	1340	1215	1110	1020	945	880	825	775	730	690	
2F370		1500	1340	1215	1110	1020	945	880	825	775	730	690	
2F400		1500	1340	1215	1110	1020	945	880	825	775	730	690	
3F385		1500	1345	1220	1115	1030	955	890	835	785	740	700	
3F430		1450	1300	1180	1080	995	920	860	805	755	715	675	
3F475		1400	1255	1140	1040	960	890	830	775	730	690	655	
3F515		1350	1210	1100	1005	925	860	800	750	705	665	630	
3F550		1300	1165	1055	965	890	825	770	720	680	640	605	
3F600		1150	1030	935	855	790	730	680	640	600	565	535	
3F650		950	850	770	705	650	605	560	525	495	465	440	
3F700		700	625	570	520	480	445	415	385	365	345	325	
3V360		1400	1260	1150	1060	980	910	850	800	750	710	675	
3V405		1350	1215	1110	1020	945	875	820	770	725	685	650	
3V450		1350	1215	1110	1020	945	875	820	770	725	685	650	
3V490		1300	1170	1070	980	910	845	790	740	700	660	625	
3V525		1250	1125	1025	945	875	810	760	715	670	635	600	
3V575		1150	1035	945	870	805	745	700	655	620	585	555	
3V633		950	855	780	715	665	615	575	540	510	480	455	
3V688		700	630	575	530	490	455	425	400	375	355	335	

TX-15 / A1N1L15Q <FORK>

Unit: kg

Load center		500mm	600	700	800	900	1000	1100	1200	1300	1400	1500	
Mast name													
Super Elastic Tire	2W270	1500	1345	1215	1110	1025	950	885	830	780	735	695	
	2W300	1500	1345	1215	1110	1025	950	885	830	780	735	695	
	2W330	1500	1345	1215	1110	1025	950	885	830	780	735	695	
	2W350	1500	1345	1215	1110	1025	950	885	830	780	735	695	
	2W370	1500	1345	1215	1110	1025	950	885	830	780	735	695	
	2W400	1500	1345	1215	1110	1025	950	885	830	780	735	695	
	2W450	1450	1300	1175	1075	990	920	855	800	750	710	670	
	2W500	1400	1255	1135	1040	955	885	825	775	725	685	650	
	2F270	1500	1340	1215	1110	1020	945	880	825	775	730	690	
	2F300	1500	1340	1215	1110	1020	945	880	825	775	730	690	
	2F330	1500	1340	1215	1110	1020	945	880	825	775	730	690	
	2F350	1500	1340	1215	1110	1020	945	880	825	775	730	690	
	2F370	1500	1340	1215	1110	1020	945	880	825	775	730	690	
	2F400	1500	1340	1215	1110	1020	945	880	825	775	730	690	
	3F385	1500	1345	1220	1115	1030	955	890	835	785	740	700	
	3F430	1450	1300	1180	1080	995	920	860	805	755	715	675	
	3F475	1400	1255	1140	1040	960	890	830	775	730	690	655	
	3F515	1300	1165	1055	965	890	825	770	720	680	640	605	
	3F550	1200	1075	975	890	825	765	710	665	625	590	560	
	3F600	900	805	730	670	615	570	535	500	470	440	420	
	3F650	750	670	610	555	515	475	445	415	390	370	350	
	3F700	550	490	445	410	375	350	325	305	285	270	255	
	3V360	1400	1260	1150	1060	980	910	850	800	750	710	675	
	3V405	1350	1215	1110	1020	945	875	820	770	725	685	650	
	3V450	1300	1170	1070	980	910	845	790	740	700	660	625	
	3V490	1250	1125	1025	945	875	810	760	715	670	635	600	
	3V525	1200	1080	985	905	840	780	730	685	645	610	580	
	3V575	900	810	740	680	630	585	545	510	485	455	435	
	3V633	750	675	615	565	525	485	455	425	400	380	360	
	3V688	550	495	450	415	385	355	335	310	295	280	265	
	Cushion Tire	2W270	1500	1345	1215	1110	1025	950	885	830	780	735	695
		2W300	1500	1345	1215	1110	1025	950	885	830	780	735	695
		2W330	1500	1345	1215	1110	1025	950	885	830	780	735	695
2W350		1500	1345	1215	1110	1025	950	885	830	780	735	695	
2W370		1500	1345	1215	1110	1025	950	885	830	780	735	695	
2W400		1500	1345	1215	1110	1025	950	885	830	780	735	695	
2W450		1450	1300	1175	1075	990	920	855	800	750	710	670	
2W500		1400	1255	1135	1040	955	885	825	775	725	685	650	
2F270		1500	1340	1215	1110	1020	945	880	825	775	730	690	
2F300		1500	1340	1215	1110	1020	945	880	825	775	730	690	
2F330		1500	1340	1215	1110	1020	945	880	825	775	730	690	
2F350		1500	1340	1215	1110	1020	945	880	825	775	730	690	
2F370		1500	1340	1215	1110	1020	945	880	825	775	730	690	
2F400		1500	1340	1215	1110	1020	945	880	825	775	730	690	
3F385		1500	1345	1220	1115	1030	955	890	835	785	740	700	
3F430		1450	1300	1180	1080	995	920	860	805	755	715	675	
3F475		1400	1255	1140	1040	960	890	830	775	730	690	655	
3F515		1350	1210	1100	1005	925	860	800	750	705	665	630	
3F550		1300	1165	1055	965	890	825	770	720	680	640	605	
3F600		1150	1030	935	855	790	730	680	640	600	565	535	
3F650		950	850	770	705	650	605	560	525	495	465	440	
3F700		700	625	570	520	480	445	415	385	365	345	325	
3V360		1400	1260	1150	1060	980	910	850	800	750	710	675	
3V405		1350	1215	1110	1020	945	875	820	770	725	685	650	
3V450		1350	1215	1110	1020	945	875	820	770	725	685	650	
3V490		1300	1170	1070	980	910	845	790	740	700	660	625	
3V525		1250	1125	1025	945	875	810	760	715	670	635	600	
3V575		1150	1035	945	870	805	745	700	655	620	585	555	
3V633		950	855	780	715	665	615	575	540	510	480	455	
3V688		700	630	575	530	490	455	425	400	375	355	335	

TX-16 / AG1N1L16Q <FORK>

Unit: kg

Load center		500mm	600	700	800	900	1000	1100	1200	1300	1400	1500	
Mast name													
Super Elastic Tire	2W270	1600	1430	1300	1185	1095	1015	945	885	830	785	740	
	2W300	1600	1430	1300	1185	1095	1015	945	885	830	785	740	
	2W330	1600	1430	1300	1185	1095	1015	945	885	830	785	740	
	2W350	1600	1430	1300	1185	1095	1015	945	885	830	785	740	
	2W370	1600	1430	1300	1185	1095	1015	945	885	830	785	740	
	2W400	1600	1430	1300	1185	1095	1015	945	885	830	785	740	
	2W450	1500	1345	1215	1110	1025	950	885	830	780	735	695	
	2W500	1450	1300	1175	1075	990	920	855	800	750	710	670	
	2F270	1600	1430	1295	1185	1090	1010	940	880	825	780	740	
	2F300	1600	1430	1295	1185	1090	1010	940	880	825	780	740	
	2F330	1600	1430	1295	1185	1090	1010	940	880	825	780	740	
	2F350	1600	1430	1295	1185	1090	1010	940	880	825	780	740	
	2F370	1600	1430	1295	1185	1090	1010	940	880	825	780	740	
	2F400	1550	1385	1255	1145	1055	980	910	855	800	755	715	
	3F385	1550	1390	1260	1155	1065	985	920	860	810	765	725	
	3F430	1500	1345	1220	1115	1030	955	890	835	785	740	700	
	3F475	1450	1300	1180	1080	995	920	860	805	755	715	675	
	3F515	1350	1210	1100	1005	925	860	800	750	705	665	630	
	3F550	1300	1165	1055	965	890	825	770	720	680	640	605	
	3F600	1250	1120	1015	930	855	795	740	695	650	615	585	
	3F650	1150	1030	935	855	790	730	680	640	600	565	535	
	3F700	1100	985	895	820	755	700	650	610	575	540	510	
	3V360	1550	1400	1275	1170	1085	1010	940	885	835	790	745	
	3V405	1500	1355	1235	1135	1050	975	910	855	805	760	725	
	3V450	1450	1310	1190	1095	1015	945	880	825	780	735	700	
	3V490	1350	1215	1110	1020	945	875	820	770	725	685	650	
	3V525	1300	1170	1070	980	910	845	790	740	700	660	625	
	3V575	1250	1125	1025	945	875	810	760	715	670	635	600	
	3V633	1150	1035	945	870	805	745	700	655	620	585	555	
	3V688	1100	990	905	830	770	715	670	625	590	560	530	
	Cushion Tire	2W270	1600	1430	1300	1185	1095	1015	945	885	830	785	740
		2W300	1600	1430	1300	1185	1095	1015	945	885	830	785	740
		2W330	1600	1430	1300	1185	1095	1015	945	885	830	785	740
2W350		1600	1430	1300	1185	1095	1015	945	885	830	785	740	
2W370		1600	1430	1300	1185	1095	1015	945	885	830	785	740	
2W400		1600	1430	1300	1185	1095	1015	945	885	830	785	740	
2W450		1550	1385	1255	1150	1060	980	915	855	805	760	720	
2W500		1500	1345	1215	1110	1025	950	885	830	780	735	695	
2F270		1600	1430	1295	1185	1090	1010	940	880	825	780	740	
2F300		1600	1430	1295	1185	1090	1010	940	880	825	780	740	
2F330		1600	1430	1295	1185	1090	1010	940	880	825	780	740	
2F350		1600	1430	1295	1185	1090	1010	940	880	825	780	740	
2F370		1600	1430	1295	1185	1090	1010	940	880	825	780	740	
2F400		1600	1430	1295	1185	1090	1010	940	880	825	780	740	
3F385		1600	1435	1300	1190	1100	1020	950	890	835	790	745	
3F430		1550	1390	1260	1155	1065	985	920	860	810	765	725	
3F475		1500	1345	1220	1115	1030	955	890	835	785	740	700	
3F515		1450	1300	1180	1080	995	920	860	805	755	715	675	
3F550		1400	1255	1140	1040	960	890	830	775	730	690	655	
3F600		1350	1210	1100	1005	925	860	800	750	705	665	630	
3F650		1300	1165	1055	965	890	825	770	720	680	640	605	
3F700		1250	1120	1015	930	855	795	740	695	650	615	585	
3V360		1550	1400	1275	1170	1085	1010	940	885	835	790	745	
3V405		1500	1355	1235	1135	1050	975	910	855	805	760	725	
3V450		1450	1310	1190	1095	1015	945	880	825	780	735	700	
3V490		1400	1260	1150	1060	980	910	850	800	750	710	675	
3V525		1350	1215	1110	1020	945	875	820	770	725	685	650	
3V575		1350	1215	1110	1020	945	875	820	770	725	685	650	
3V633		1250	1125	1025	945	875	810	760	715	670	635	600	
3V688		1200	1080	985	905	840	780	730	685	645	610	580	

TX-18 / A1N1L18Q <FORK>

Unit: kg

Load center Mast name		500mm	600	700	800	900	1000	1100	1200	1300	1400	1500
Super Elastic Tire	2W270	1750	1570	1420	1300	1200	1110	1035	970	910	860	815
	2W300	1750	1570	1420	1300	1200	1110	1035	970	910	860	815
	2W330	1750	1570	1420	1300	1200	1110	1035	970	910	860	815
	2W350	1750	1570	1420	1300	1200	1110	1035	970	910	860	815
	2W370	1750	1570	1420	1300	1200	1110	1035	970	910	860	815
	2W400	1700	1525	1380	1265	1165	1080	1005	940	885	835	790
	2W450	1600	1435	1300	1190	1095	1015	945	885	830	785	745
	2W500	1500	1345	1220	1115	1025	950	885	830	780	735	695
	2F270	1750	1565	1420	1300	1195	1105	1030	965	910	855	810
	2F300	1750	1565	1420	1300	1195	1105	1030	965	910	855	810
	2F330	1750	1565	1420	1300	1195	1105	1030	965	910	855	810
	2F350	1750	1565	1420	1300	1195	1105	1030	965	910	855	810
	2F370	1700	1520	1380	1260	1160	1075	1000	940	880	830	785
	2F400	1650	1475	1340	1225	1125	1045	975	910	855	805	765
	3F385	1650	1480	1345	1230	1135	1050	980	920	865	815	770
	3F430	1600	1435	1305	1190	1100	1020	950	890	840	790	750
	3F475	1550	1390	1260	1155	1065	990	920	865	810	765	725
	3F515	1450	1300	1180	1080	995	925	860	805	760	715	680
	3F550	1250	1120	1015	930	860	795	740	695	655	615	585
	3F600	950	850	770	705	650	605	565	530	495	470	445
	3V360	1500	1355	1235	1135	1050	975	915	860	810	765	725
	3V405	1500	1355	1235	1135	1050	975	915	860	810	765	725
	3V450	1500	1355	1235	1135	1050	975	915	860	810	765	725
	3V490	1450	1310	1195	1095	1015	945	885	830	780	740	700
3V525	1250	1125	1030	945	875	815	760	715	675	635	605	
3V575	950	855	780	720	665	620	580	540	510	485	460	
Cushion Tire	2W270	1750	1570	1420	1300	1200	1110	1035	970	910	860	815
	2W300	1750	1570	1420	1300	1200	1110	1035	970	910	860	815
	2W330	1750	1570	1420	1300	1200	1110	1035	970	910	860	815
	2W350	1750	1570	1420	1300	1200	1110	1035	970	910	860	815
	2W370	1750	1570	1420	1300	1200	1110	1035	970	910	860	815
	2W400	1750	1570	1420	1300	1200	1110	1035	970	910	860	815
	2W450	1650	1480	1340	1225	1130	1045	975	915	860	810	765
	2W500	1550	1390	1260	1150	1060	985	915	860	805	760	720
	2F270	1750	1565	1420	1300	1195	1105	1030	965	910	855	810
	2F300	1750	1565	1420	1300	1195	1105	1030	965	910	855	810
	2F330	1750	1565	1420	1300	1195	1105	1030	965	910	855	810
	2F350	1750	1565	1420	1300	1195	1105	1030	965	910	855	810
	2F370	1750	1565	1420	1300	1195	1105	1030	965	910	855	810
	2F400	1700	1520	1380	1260	1160	1075	1000	940	880	830	785
	3F385	1700	1525	1385	1265	1170	1085	1010	945	890	840	795
	3F430	1650	1480	1345	1230	1135	1050	980	920	865	815	770
	3F475	1600	1435	1305	1190	1100	1020	950	890	840	790	750
	3F515	1500	1345	1220	1120	1030	955	890	835	785	740	700
	3F550	1450	1300	1180	1080	995	925	860	805	760	715	680
	3F600	1200	1075	975	895	825	765	715	670	630	590	560
	3V360	1500	1355	1235	1135	1050	975	915	860	810	765	725
	3V405	1500	1355	1235	1135	1050	975	915	860	810	765	725
	3V450	1500	1355	1235	1135	1050	975	915	860	810	765	725
	3V490	1450	1310	1195	1095	1015	945	885	830	780	740	700
3V525	1400	1265	1150	1060	980	910	850	800	755	715	675	
3V575	1200	1080	985	905	840	780	730	685	645	610	580	



TX-18 / AG1N1L18Q <FORK>

Unit: kg

Load center		500mm	600	700	800	900	1000	1100	1200	1300	1400	1500	
Mast name													
Super Elastic Tire	2W270	1800	1615	1460	1335	1230	1140	1065	995	935	885	835	
	2W300	1800	1615	1460	1335	1230	1140	1065	995	935	885	835	
	2W330	1800	1615	1460	1335	1230	1140	1065	995	935	885	835	
	2W350	1800	1615	1460	1335	1230	1140	1065	995	935	885	835	
	2W370	1800	1615	1460	1335	1230	1140	1065	995	935	885	835	
	2W400	1750	1570	1420	1300	1200	1110	1035	970	910	860	815	
	2W450	1650	1480	1340	1225	1130	1045	975	915	860	810	765	
	2W500	1550	1390	1260	1150	1060	985	915	860	805	760	720	
	2F270	1800	1610	1460	1335	1230	1140	1060	995	935	880	835	
	2F300	1800	1610	1460	1335	1230	1140	1060	995	935	880	835	
	2F330	1800	1610	1460	1335	1230	1140	1060	995	935	880	835	
	2F350	1800	1610	1460	1335	1230	1140	1060	995	935	880	835	
	2F370	1750	1565	1420	1300	1195	1105	1030	965	910	855	810	
	2F400	1700	1520	1380	1260	1160	1075	1000	940	880	830	785	
	3F385	1700	1525	1385	1265	1170	1085	1010	945	890	840	795	
	3F430	1650	1480	1345	1230	1135	1050	980	920	865	815	770	
	3F475	1600	1435	1305	1190	1100	1020	950	890	840	790	750	
	3F515	1500	1345	1220	1120	1030	955	890	835	785	740	700	
	3F550	1400	1255	1140	1045	960	890	830	780	735	690	655	
	3F600	1350	1210	1100	1005	925	860	800	750	705	665	630	
	3F650	1300	1165	1060	970	895	830	770	725	680	640	610	
	3F700	1200	1075	975	895	825	765	715	670	630	590	560	
	3V360	1700	1535	1400	1285	1190	1110	1035	970	915	865	820	
	3V405	1650	1490	1360	1250	1155	1075	1005	945	890	840	795	
	3V450	1600	1445	1315	1210	1120	1040	975	915	860	815	775	
	3V490	1500	1355	1235	1135	1050	975	915	860	810	765	725	
	3V525	1400	1265	1150	1060	980	910	850	800	755	715	675	
	3V575	1300	1175	1070	985	910	845	790	745	700	660	630	
	3V633	1200	1080	985	905	840	780	730	685	645	610	580	
	3V688	1150	1035	945	870	805	750	700	655	620	585	555	
	Cushion Tire	2W270	1800	1615	1460	1335	1230	1140	1065	995	935	885	835
		2W300	1800	1615	1460	1335	1230	1140	1065	995	935	885	835
		2W330	1800	1615	1460	1335	1230	1140	1065	995	935	885	835
2W350		1800	1615	1460	1335	1230	1140	1065	995	935	885	835	
2W370		1800	1615	1460	1335	1230	1140	1065	995	935	885	835	
2W400		1800	1615	1460	1335	1230	1140	1065	995	935	885	835	
2W450		1750	1570	1420	1300	1200	1110	1035	970	910	860	815	
2W500		1700	1525	1380	1265	1165	1080	1005	940	885	835	790	
2F270		1800	1610	1460	1335	1230	1140	1060	995	935	880	835	
2F300		1800	1610	1460	1335	1230	1140	1060	995	935	880	835	
2F330		1800	1610	1460	1335	1230	1140	1060	995	935	880	835	
2F350		1800	1610	1460	1335	1230	1140	1060	995	935	880	835	
2F370		1800	1610	1460	1335	1230	1140	1060	995	935	880	835	
2F400		1800	1610	1460	1335	1230	1140	1060	995	935	880	835	
3F385		1800	1615	1465	1340	1235	1150	1070	1005	945	890	845	
3F430		1750	1570	1425	1305	1205	1115	1040	975	915	865	820	
3F475		1650	1480	1345	1230	1135	1050	980	920	865	815	770	
3F515		1600	1435	1305	1190	1100	1020	950	890	840	790	750	
3F550		1550	1390	1260	1155	1065	990	920	865	810	765	725	
3F600		1500	1345	1220	1120	1030	955	890	835	785	740	700	
3F650		1450	1300	1180	1080	995	925	860	805	760	715	680	
3F700		1400	1255	1140	1045	960	890	830	780	735	690	655	
3V360		1700	1535	1400	1285	1190	1110	1035	970	915	865	820	
3V405		1650	1490	1360	1250	1155	1075	1005	945	890	840	795	
3V450		1600	1445	1315	1210	1120	1040	975	915	860	815	775	
3V490		1550	1400	1275	1175	1085	1010	945	885	835	790	750	
3V525		1500	1355	1235	1135	1050	975	915	860	810	765	725	
3V575		1450	1310	1195	1095	1015	945	885	830	780	740	700	
3V633		1400	1265	1150	1060	980	910	850	800	755	715	675	
3V688		1300	1175	1070	985	910	845	790	745	700	660	630	

TX-20 / AG1N1L20Q <FORK>

Unit: kg

Load center		500mm	600	700	800	900	1000	1100	1200	1300	1400	1500	
Mast name													
Super Elastic Tire	2W270	2000	1790	1625	1485	1370	1270	1185	1105	1040	980	930	
	2W300	2000	1790	1625	1485	1370	1270	1185	1105	1040	980	930	
	2W330	2000	1790	1625	1485	1370	1270	1185	1105	1040	980	930	
	2W350	2000	1790	1625	1485	1370	1270	1185	1105	1040	980	930	
	2W370	2000	1790	1625	1485	1370	1270	1185	1105	1040	980	930	
	2W400	1950	1745	1585	1450	1335	1235	1155	1080	1015	960	905	
	2W450	1850	1655	1505	1375	1265	1175	1095	1025	965	910	860	
	2W500	1750	1570	1420	1300	1200	1110	1035	970	910	860	815	
	2F270	2000	1790	1625	1485	1365	1265	1180	1105	1040	980	925	
	2F300	2000	1790	1625	1485	1365	1265	1180	1105	1040	980	925	
	2F330	2000	1790	1625	1485	1365	1265	1180	1105	1040	980	925	
	2F350	2000	1790	1625	1485	1365	1265	1180	1105	1040	980	925	
	2F370	1950	1745	1580	1445	1330	1235	1150	1075	1010	955	905	
	2F400	1900	1700	1540	1410	1300	1205	1120	1050	985	930	880	
	3F385	1900	1705	1545	1415	1305	1210	1130	1060	995	940	890	
	3F430	1850	1660	1505	1380	1270	1180	1100	1030	970	915	865	
	3F475	1750	1570	1425	1305	1205	1115	1040	975	915	865	820	
	3F515	1650	1480	1345	1230	1135	1050	980	920	865	815	770	
	3F550	1550	1390	1260	1155	1065	990	920	865	810	765	725	
	3F600	1450	1300	1180	1080	995	925	860	805	760	715	680	
	3F650	1350	1210	1100	1005	925	860	800	750	705	665	630	
	3F700	1200	1075	975	895	825	765	715	670	630	590	560	
	3V360	1850	1670	1525	1400	1295	1205	1125	1060	995	945	895	
	3V405	1800	1625	1480	1360	1260	1175	1095	1030	970	920	870	
	3V450	1700	1535	1400	1285	1190	1110	1035	970	915	865	820	
	3V490	1650	1490	1360	1250	1155	1075	1005	945	890	840	795	
	3V525	1550	1400	1275	1175	1085	1010	945	885	835	790	750	
	3V575	1450	1310	1195	1095	1015	945	885	830	780	740	700	
	3V633	1350	1220	1110	1020	945	880	820	770	725	690	650	
	3V688	1200	1080	985	905	840	780	730	685	645	610	580	
	Cushion Tire	2W270	2000	1790	1625	1485	1370	1270	1185	1105	1040	980	930
		2W300	2000	1790	1625	1485	1370	1270	1185	1105	1040	980	930
		2W330	2000	1790	1625	1485	1370	1270	1185	1105	1040	980	930
2W350		2000	1790	1625	1485	1370	1270	1185	1105	1040	980	930	
2W370		2000	1790	1625	1485	1370	1270	1185	1105	1040	980	930	
2W400		1950	1745	1585	1450	1335	1235	1155	1080	1015	960	905	
2W450		1850	1655	1505	1375	1265	1175	1095	1025	965	910	860	
2W500		1800	1615	1460	1335	1230	1140	1065	995	935	885	835	
2F270		2000	1790	1625	1485	1365	1265	1180	1105	1040	980	925	
2F300		2000	1790	1625	1485	1365	1265	1180	1105	1040	980	925	
2F330		2000	1790	1625	1485	1365	1265	1180	1105	1040	980	925	
2F350		2000	1790	1625	1485	1365	1265	1180	1105	1040	980	925	
2F370		2000	1790	1625	1485	1365	1265	1180	1105	1040	980	925	
2F400		1950	1745	1580	1445	1330	1235	1150	1075	1010	955	905	
3F385		1900	1705	1545	1415	1305	1210	1130	1060	995	940	890	
3F430		1850	1660	1505	1380	1270	1180	1100	1030	970	915	865	
3F475		1800	1615	1465	1340	1235	1150	1070	1005	945	890	845	
3F515		1750	1570	1425	1305	1205	1115	1040	975	915	865	820	
3F550		1700	1525	1385	1265	1170	1085	1010	945	890	840	795	
3F600		1650	1480	1345	1230	1135	1050	980	920	865	815	770	
3F650		1600	1435	1305	1190	1100	1020	950	890	840	790	750	
3F700		1500	1345	1220	1120	1030	955	890	835	785	740	700	
3V360		1850	1670	1525	1400	1295	1205	1125	1060	995	945	895	
3V405		1800	1625	1480	1360	1260	1175	1095	1030	970	920	870	
3V450		1700	1535	1400	1285	1190	1110	1035	970	915	865	820	
3V490		1650	1490	1360	1250	1155	1075	1005	945	890	840	795	
3V525		1600	1445	1315	1210	1120	1040	975	915	860	815	775	
3V575		1550	1400	1275	1175	1085	1010	945	885	835	790	750	
3V633		1500	1355	1235	1135	1050	975	915	860	810	765	725	
3V688		1450	1310	1195	1095	1015	945	885	830	780	740	700	

## Loading Capacity Side Shift - Integral Type

TX-13 / AS1N1L13Q <Side Shift - Integral Type>

Unit: kg

Load center		500mm	600	700	800	900	1000	1100	1200	1300	1400	1500	
Mast name													
Super Elastic Tire	2W270	1250	1125	1020	935	865	800	750	700	660	625	590	
	2W300	1250	1125	1020	935	865	800	750	700	660	625	590	
	2W330	1250	1125	1020	935	865	800	750	700	660	625	590	
	2W350	1250	1125	1020	935	865	800	750	700	660	625	590	
	2W370	1250	1125	1020	935	865	800	750	700	660	625	590	
	2W400	1250	1125	1020	935	865	800	750	700	660	625	590	
	2W450	1150	1035	940	860	795	735	690	645	605	575	540	
	2W500	1100	990	900	825	760	705	660	615	580	550	520	
	2F270	1250	1120	1020	935	860	800	745	700	655	620	590	
	2F300	1250	1120	1020	935	860	800	745	700	655	620	590	
	2F330	1250	1120	1020	935	860	800	745	700	655	620	590	
	2F350	1250	1120	1020	935	860	800	745	700	655	620	590	
	2F370	1250	1120	1020	935	860	800	745	700	655	620	590	
	2F400	1200	1075	980	895	825	765	715	670	630	595	565	
	3F385	1200	1080	980	900	830	775	720	675	635	600	570	
	3F430	1150	1035	940	865	795	740	690	650	610	575	545	
	3F475	1050	945	860	790	725	675	630	590	555	525	500	
	3F515	950	855	775	710	660	610	570	535	505	475	450	
	3F550	950	855	775	710	660	610	570	535	505	475	450	
	3F600	800	720	655	600	555	515	480	450	425	400	380	
	3F650	550	495	450	410	380	355	330	310	290	275	260	
	3F700	350	315	285	260	240	225	210	195	185	175	165	
	3V360	1150	1040	950	875	810	755	705	665	625	595	565	
	3V405	1100	995	910	835	775	725	675	635	600	570	540	
	3V450	1050	950	870	800	740	690	645	605	570	540	515	
	3V490	950	860	785	725	670	625	585	550	520	490	465	
	3V525	950	860	785	725	670	625	585	550	520	490	465	
	3V575	800	725	660	610	565	525	490	460	435	410	390	
	3V633	550	495	455	415	385	360	335	315	300	285	270	
	3V688	350	315	290	265	245	230	215	200	190	180	170	
	Cushion Tire	2W270	1250	1125	1020	935	865	800	750	700	660	625	590
		2W300	1250	1125	1020	935	865	800	750	700	660	625	590
		2W330	1250	1125	1020	935	865	800	750	700	660	625	590
2W350		1250	1125	1020	935	865	800	750	700	660	625	590	
2W370		1250	1125	1020	935	865	800	750	700	660	625	590	
2W400		1250	1125	1020	935	865	800	750	700	660	625	590	
2W450		1200	1080	980	900	830	770	720	675	635	600	565	
2W500		1150	1035	940	860	795	735	690	645	605	575	540	
2F270		1250	1120	1020	935	860	800	745	700	655	620	590	
2F300		1250	1120	1020	935	860	800	745	700	655	620	590	
2F330		1250	1120	1020	935	860	800	745	700	655	620	590	
2F350		1250	1120	1020	935	860	800	745	700	655	620	590	
2F370		1250	1120	1020	935	860	800	745	700	655	620	590	
2F400		1250	1120	1020	935	860	800	745	700	655	620	590	
3F385		1200	1080	980	900	830	775	720	675	635	600	570	
3F430		1200	1080	980	900	830	775	720	675	635	600	570	
3F475		1150	1035	940	865	795	740	690	650	610	575	545	
3F515		1100	990	900	825	760	710	660	620	585	550	520	
3F550		1050	945	860	790	725	675	630	590	555	525	500	
3F600		1000	900	820	750	695	645	600	565	530	500	475	
3F650		850	765	695	635	590	545	510	480	450	425	405	
3F700		600	540	490	450	415	385	360	335	315	300	285	
3V360		1150	1040	950	875	810	755	705	665	625	595	565	
3V405		1100	995	910	835	775	725	675	635	600	570	540	
3V450		1100	995	910	835	775	725	675	635	600	570	540	
3V490		1050	950	870	800	740	690	645	605	570	540	515	
3V525		1000	905	825	760	705	655	615	580	545	515	490	
3V575		950	860	785	725	670	625	585	550	520	490	465	
3V633		850	770	700	645	600	560	520	490	465	440	415	
3V688		600	540	495	455	420	395	370	345	325	310	295	

TX-15 / AS1N1L15Q <Side Shift - Integral Type>

Unit: kg

Load center		500mm	600	700	800	900	1000	1100	1200	1300	1400	1500	
Mast name													
Super Elastic Tire	2W270	1500	1350	1225	1125	1035	960	900	840	790	750	710	
	2W300	1500	1350	1225	1125	1035	960	900	840	790	750	710	
	2W330	1500	1350	1225	1125	1035	960	900	840	790	750	710	
	2W350	1500	1350	1225	1125	1035	960	900	840	790	750	710	
	2W370	1500	1350	1225	1125	1035	960	900	840	790	750	710	
	2W400	1500	1350	1225	1125	1035	960	900	840	790	750	710	
	2W450	1450	1305	1185	1085	1000	930	870	815	765	725	685	
	2W500	1400	1260	1145	1050	965	900	840	785	740	700	660	
	2F270	1500	1345	1225	1120	1035	960	895	840	790	745	705	
	2F300	1500	1345	1225	1120	1035	960	895	840	790	745	705	
	2F330	1500	1345	1225	1120	1035	960	895	840	790	745	705	
	2F350	1500	1345	1225	1120	1035	960	895	840	790	745	705	
	2F370	1500	1345	1225	1120	1035	960	895	840	790	745	705	
	2F400	1500	1345	1225	1120	1035	960	895	840	790	745	705	
	3F385	1500	1350	1230	1125	1040	965	900	845	795	750	715	
	3F430	1450	1305	1185	1090	1005	935	870	820	770	725	690	
	3F475	1400	1260	1145	1050	970	900	840	790	745	700	665	
	3F515	1300	1170	1065	975	900	835	780	735	690	650	620	
	3F550	1200	1080	980	900	830	775	720	675	635	600	570	
	3F600	900	810	735	675	625	580	540	505	475	450	425	
	3F650	700	630	570	525	485	450	420	395	370	350	330	
	3F700	500	450	410	375	345	320	300	280	265	250	235	
	3V360	1400	1265	1160	1065	990	920	860	810	765	725	685	
	3V405	1350	1220	1115	1030	955	890	830	780	735	695	660	
	3V450	1300	1175	1075	990	915	855	800	750	710	670	635	
	3V490	1250	1130	1035	950	880	820	770	725	680	645	610	
	3V525	1200	1085	990	915	845	790	740	695	655	620	590	
	3V575	900	815	745	685	635	590	555	520	490	465	440	
	3V633	700	630	580	530	495	460	430	405	380	360	340	
	3V688	500	450	410	380	350	325	305	290	270	255	245	
	Cushion Tire	2W270	1500	1350	1225	1125	1035	960	900	840	790	750	710
		2W300	1500	1350	1225	1125	1035	960	900	840	790	750	710
		2W330	1500	1350	1225	1125	1035	960	900	840	790	750	710
2W350		1500	1350	1225	1125	1035	960	900	840	790	750	710	
2W370		1500	1350	1225	1125	1035	960	900	840	790	750	710	
2W400		1500	1350	1225	1125	1035	960	900	840	790	750	710	
2W450		1450	1305	1185	1085	1000	930	870	815	765	725	685	
2W500		1400	1260	1145	1050	965	900	840	785	740	700	660	
2F270		1500	1345	1225	1120	1035	960	895	840	790	745	705	
2F300		1500	1345	1225	1120	1035	960	895	840	790	745	705	
2F330		1500	1345	1225	1120	1035	960	895	840	790	745	705	
2F350		1500	1345	1225	1120	1035	960	895	840	790	745	705	
2F370		1500	1345	1225	1120	1035	960	895	840	790	745	705	
2F400		1500	1345	1225	1120	1035	960	895	840	790	745	705	
3F385		1500	1350	1230	1125	1040	965	900	845	795	750	715	
3F430		1450	1305	1185	1090	1005	935	870	820	770	725	690	
3F475		1400	1260	1145	1050	970	900	840	790	745	700	665	
3F515		1350	1215	1105	1015	935	870	810	760	715	675	640	
3F550		1300	1170	1065	975	900	835	780	735	690	650	620	
3F600		1150	1035	940	865	795	740	690	650	610	575	545	
3F650		950	855	775	710	660	610	570	535	505	475	450	
3F700		700	630	570	525	485	450	420	395	370	350	330	
3V360		1400	1265	1160	1065	990	920	860	810	765	725	685	
3V405		1350	1220	1115	1030	955	890	830	780	735	695	660	
3V450		1350	1220	1115	1030	955	890	830	780	735	695	660	
3V490		1300	1175	1075	990	915	855	800	750	710	670	635	
3V525		1250	1130	1035	950	880	820	770	725	680	645	610	
3V575		1150	1040	950	875	810	755	705	665	625	595	565	
3V633		950	860	785	725	670	625	585	550	520	490	465	
3V688		700	630	580	530	495	460	430	405	380	360	340	

TX-15 / A1N1L15Q <Side Shift - Integral Type>

Unit: kg

Load center		500mm	600	700	800	900	1000	1100	1200	1300	1400	1500	
Mast name													
Super Elastic Tire	2W270	1500	1350	1225	1125	1035	960	900	840	790	750	710	
	2W300	1500	1350	1225	1125	1035	960	900	840	790	750	710	
	2W330	1500	1350	1225	1125	1035	960	900	840	790	750	710	
	2W350	1500	1350	1225	1125	1035	960	900	840	790	750	710	
	2W370	1500	1350	1225	1125	1035	960	900	840	790	750	710	
	2W400	1500	1350	1225	1125	1035	960	900	840	790	750	710	
	2W450	1450	1305	1185	1085	1000	930	870	815	765	725	685	
	2W500	1400	1260	1145	1050	965	900	840	785	740	700	660	
	2F270	1500	1345	1225	1120	1035	960	895	840	790	745	705	
	2F300	1500	1345	1225	1120	1035	960	895	840	790	745	705	
	2F330	1500	1345	1225	1120	1035	960	895	840	790	745	705	
	2F350	1500	1345	1225	1120	1035	960	895	840	790	745	705	
	2F370	1500	1345	1225	1120	1035	960	895	840	790	745	705	
	2F400	1500	1345	1225	1120	1035	960	895	840	790	745	705	
	3F385	1500	1350	1230	1125	1040	965	900	845	795	750	715	
	3F430	1450	1305	1185	1090	1005	935	870	820	770	725	690	
	3F475	1400	1260	1145	1050	970	900	840	790	745	700	665	
	3F515	1300	1170	1065	975	900	835	780	735	690	650	620	
	3F550	1200	1080	980	900	830	775	720	675	635	600	570	
	3F600	900	810	735	675	625	580	540	505	475	450	425	
	3F650	750	675	615	560	520	480	450	420	395	375	355	
	3F700	550	495	450	410	380	355	330	310	290	275	260	
	3V360	1400	1265	1160	1065	990	920	860	810	765	725	685	
	3V405	1350	1220	1115	1030	955	890	830	780	735	695	660	
	3V450	1300	1175	1075	990	915	855	800	750	710	670	635	
	3V490	1250	1130	1035	950	880	820	770	725	680	645	610	
	3V525	1200	1085	990	915	845	790	740	695	655	620	590	
	3V575	900	815	745	685	635	590	555	520	490	465	440	
	3V633	750	675	620	570	530	490	460	435	410	385	365	
	3V688	550	495	455	415	385	360	335	315	300	285	270	
	Cushion Tire	2W270	1500	1350	1225	1125	1035	960	900	840	790	750	710
		2W300	1500	1350	1225	1125	1035	960	900	840	790	750	710
		2W330	1500	1350	1225	1125	1035	960	900	840	790	750	710
2W350		1500	1350	1225	1125	1035	960	900	840	790	750	710	
2W370		1500	1350	1225	1125	1035	960	900	840	790	750	710	
2W400		1500	1350	1225	1125	1035	960	900	840	790	750	710	
2W450		1450	1305	1185	1085	1000	930	870	815	765	725	685	
2W500		1400	1260	1145	1050	965	900	840	785	740	700	660	
2F270		1500	1345	1225	1120	1035	960	895	840	790	745	705	
2F300		1500	1345	1225	1120	1035	960	895	840	790	745	705	
2F330		1500	1345	1225	1120	1035	960	895	840	790	745	705	
2F350		1500	1345	1225	1120	1035	960	895	840	790	745	705	
2F370		1500	1345	1225	1120	1035	960	895	840	790	745	705	
2F400		1500	1345	1225	1120	1035	960	895	840	790	745	705	
3F385		1500	1350	1230	1125	1040	965	900	845	795	750	715	
3F430		1450	1305	1185	1090	1005	935	870	820	770	725	690	
3F475		1400	1260	1145	1050	970	900	840	790	745	700	665	
3F515		1350	1215	1105	1015	935	870	810	760	715	675	640	
3F550		1300	1170	1065	975	900	835	780	735	690	650	620	
3F600		1150	1035	940	865	795	740	690	650	610	575	545	
3F650		950	855	775	710	660	610	570	535	505	475	450	
3F700		700	630	570	525	485	450	420	395	370	350	330	
3V360		1400	1265	1160	1065	990	920	860	810	765	725	685	
3V405		1350	1220	1115	1030	955	890	830	780	735	695	660	
3V450		1350	1220	1115	1030	955	890	830	780	735	695	660	
3V490		1300	1175	1075	990	915	855	800	750	710	670	635	
3V525		1250	1130	1035	950	880	820	770	725	680	645	610	
3V575		1150	1040	950	875	810	755	705	665	625	595	565	
3V633		950	860	785	725	670	625	585	550	520	490	465	
3V688		700	630	580	530	495	460	430	405	380	360	340	

TX-16 / AG1N1L16Q <Side Shift - Integral Type>

Unit: kg

Load center		500mm	600	700	800	900	1000	1100	1200	1300	1400	1500	
Mast name													
Super Elastic Tire	2W270	1600	1440	1305	1200	1105	1025	960	900	845	800	755	
	2W300	1600	1440	1305	1200	1105	1025	960	900	845	800	755	
	2W330	1600	1440	1305	1200	1105	1025	960	900	845	800	755	
	2W350	1600	1440	1305	1200	1105	1025	960	900	845	800	755	
	2W370	1600	1440	1305	1200	1105	1025	960	900	845	800	755	
	2W400	1600	1440	1305	1200	1105	1025	960	900	845	800	755	
	2W450	1500	1350	1225	1125	1035	960	900	840	790	750	710	
	2W500	1450	1305	1185	1085	1000	930	870	815	765	725	685	
	2F270	1600	1435	1305	1195	1105	1025	955	895	840	795	755	
	2F300	1600	1435	1305	1195	1105	1025	955	895	840	795	755	
	2F330	1600	1435	1305	1195	1105	1025	955	895	840	795	755	
	2F350	1600	1435	1305	1195	1105	1025	955	895	840	795	755	
	2F370	1600	1435	1305	1195	1105	1025	955	895	840	795	755	
	2F400	1550	1390	1265	1160	1070	990	925	865	815	770	730	
	3F385	1550	1395	1270	1165	1075	1000	930	875	825	780	735	
	3F430	1500	1350	1230	1125	1040	965	900	845	795	750	715	
	3F475	1450	1305	1185	1090	1005	935	870	820	770	725	690	
	3F515	1350	1215	1105	1015	935	870	810	760	715	675	640	
	3F550	1300	1170	1065	975	900	835	780	735	690	650	620	
	3F600	1250	1125	1025	940	865	805	750	705	665	625	595	
	3F650	1150	1035	940	865	795	740	690	650	610	575	545	
	3F700	1100	990	900	825	760	710	660	620	585	550	520	
	3V360	1550	1400	1280	1180	1095	1020	955	895	845	800	760	
	3V405	1500	1355	1240	1145	1060	985	925	870	820	775	735	
	3V450	1450	1310	1200	1105	1025	955	895	840	790	750	710	
	3V490	1350	1220	1115	1030	955	890	830	780	735	695	660	
	3V525	1300	1175	1075	990	915	855	800	750	710	670	635	
	3V575	1250	1130	1035	950	880	820	770	725	680	645	610	
	3V633	1150	1040	950	875	810	755	705	665	625	595	565	
	3V688	1100	995	910	835	775	725	675	635	600	570	540	
	Cushion Tire	2W270	1600	1440	1305	1200	1105	1025	960	900	845	800	755
		2W300	1600	1440	1305	1200	1105	1025	960	900	845	800	755
2W330		1600	1440	1305	1200	1105	1025	960	900	845	800	755	
2W350		1600	1440	1305	1200	1105	1025	960	900	845	800	755	
2W370		1600	1440	1305	1200	1105	1025	960	900	845	800	755	
2W400		1600	1440	1305	1200	1105	1025	960	900	845	800	755	
2W450		1550	1395	1265	1160	1070	995	930	870	820	775	730	
2W500		1500	1350	1225	1125	1035	960	900	840	790	750	710	
2F270		1600	1435	1305	1195	1105	1025	955	895	840	795	755	
2F300		1600	1435	1305	1195	1105	1025	955	895	840	795	755	
2F330		1600	1435	1305	1195	1105	1025	955	895	840	795	755	
2F350		1600	1435	1305	1195	1105	1025	955	895	840	795	755	
2F370		1600	1435	1305	1195	1105	1025	955	895	840	795	755	
2F400		1600	1435	1305	1195	1105	1025	955	895	840	795	755	
3F385		1600	1440	1310	1200	1110	1030	965	905	850	805	760	
3F430		1550	1395	1270	1165	1075	1000	930	875	825	780	735	
3F475		1500	1350	1230	1125	1040	965	900	845	795	750	715	
3F515		1450	1305	1185	1090	1005	935	870	820	770	725	690	
3F550		1400	1260	1145	1050	970	900	840	790	745	700	665	
3F600		1350	1215	1105	1015	935	870	810	760	715	675	640	
3F650		1300	1170	1065	975	900	835	780	735	690	650	620	
3F700		1250	1125	1025	940	865	805	750	705	665	625	595	
3V360		1550	1400	1280	1180	1095	1020	955	895	845	800	760	
3V405		1500	1355	1240	1145	1060	985	925	870	820	775	735	
3V450		1450	1310	1200	1105	1025	955	895	840	790	750	710	
3V490		1400	1265	1160	1065	990	920	860	810	765	725	685	
3V525		1350	1220	1115	1030	955	890	830	780	735	695	660	
3V575		1350	1220	1115	1030	955	890	830	780	735	695	660	
3V633		1250	1130	1035	950	880	820	770	725	680	645	610	
3V688		1200	1085	990	915	845	790	740	695	655	620	590	

TX-18 / A1N1L18Q <Side Shift - Integral Type>

Unit: kg

Load center		500mm	600	700	800	900	1000	1100	1200	1300	1400	1500
Mast name												
Super Elastic Tire	2W270	1750	1575	1430	1310	1210	1125	1050	985	925	875	830
	2W300	1750	1575	1430	1310	1210	1125	1050	985	925	875	830
	2W330	1750	1575	1430	1310	1210	1125	1050	985	925	875	830
	2W350	1750	1575	1430	1310	1210	1125	1050	985	925	875	830
	2W370	1750	1575	1430	1310	1210	1125	1050	985	925	875	830
	2W400	1700	1530	1390	1275	1175	1095	1020	955	900	850	805
	2W450	1600	1440	1310	1200	1105	1030	960	900	845	800	760
	2W500	1500	1350	1225	1125	1040	965	900	845	795	750	710
	2F270	1750	1570	1430	1310	1210	1120	1045	980	925	870	825
	2F300	1750	1570	1430	1310	1210	1120	1045	980	925	870	825
	2F330	1750	1570	1430	1310	1210	1120	1045	980	925	870	825
	2F350	1750	1570	1430	1310	1210	1120	1045	980	925	870	825
	2F370	1700	1525	1390	1270	1175	1090	1015	955	895	845	800
	2F400	1650	1480	1345	1235	1140	1060	985	925	870	820	780
	3F385	1650	1485	1350	1240	1145	1065	995	935	880	830	785
	3F430	1600	1440	1310	1205	1110	1035	965	905	850	805	765
	3F475	1550	1395	1270	1165	1075	1000	935	875	825	780	740
	3F515	1450	1305	1190	1090	1005	935	875	820	770	730	690
	3F550	1250	1125	1025	940	870	805	755	705	665	630	595
	3F600	950	855	775	715	660	610	570	535	505	475	450
	3V360	1500	1360	1240	1145	1060	990	925	870	820	775	735
	3V405	1500	1360	1240	1145	1060	990	925	870	820	775	735
	3V450	1500	1360	1240	1145	1060	990	925	870	820	775	735
	3V490	1450	1310	1200	1105	1025	955	895	840	795	750	715
3V525	1250	1130	1035	955	885	825	770	725	685	645	615	
3V575	950	860	785	725	670	625	585	550	520	490	465	
Cushion Tire	2W270	1750	1575	1430	1310	1210	1125	1050	985	925	875	830
	2W300	1750	1575	1430	1310	1210	1125	1050	985	925	875	830
	2W330	1750	1575	1430	1310	1210	1125	1050	985	925	875	830
	2W350	1750	1575	1430	1310	1210	1125	1050	985	925	875	830
	2W370	1750	1575	1430	1310	1210	1125	1050	985	925	875	830
	2W400	1750	1575	1430	1310	1210	1125	1050	985	925	875	830
	2W450	1650	1485	1350	1235	1140	1060	990	930	875	825	780
	2W500	1550	1395	1265	1160	1070	995	930	870	820	775	735
	2F270	1750	1570	1430	1310	1210	1120	1045	980	925	870	825
	2F300	1750	1570	1430	1310	1210	1120	1045	980	925	870	825
	2F330	1750	1570	1430	1310	1210	1120	1045	980	925	870	825
	2F350	1750	1570	1430	1310	1210	1120	1045	980	925	870	825
	2F370	1750	1570	1430	1310	1210	1120	1045	980	925	870	825
	2F400	1700	1525	1390	1270	1175	1090	1015	955	895	845	800
	3F385	1700	1530	1395	1280	1180	1100	1025	960	905	855	810
	3F430	1650	1485	1350	1240	1145	1065	995	935	880	830	785
	3F475	1600	1440	1310	1205	1110	1035	965	905	850	805	765
	3F515	1500	1350	1230	1130	1040	970	905	850	800	755	715
	3F550	1450	1305	1190	1090	1005	935	875	820	770	730	690
	3F600	1200	1080	985	900	835	775	725	680	640	605	570
	3V360	1500	1360	1240	1145	1060	990	925	870	820	775	735
	3V405	1500	1360	1240	1145	1060	990	925	870	820	775	735
	3V450	1500	1360	1240	1145	1060	990	925	870	820	775	735
	3V490	1450	1310	1200	1105	1025	955	895	840	795	750	715
3V525	1400	1265	1160	1070	990	920	865	810	765	725	690	
3V575	1200	1085	995	915	850	790	740	695	655	620	590	

TX-18 / AG1N1L18Q <Side Shift - Integral Type>

Unit: kg

Load center		500mm	600	700	800	900	1000	1100	1200	1300	1400	1500
Mast name												
Super Elastic Tire	2W270	1800	1620	1470	1350	1245	1155	1080	1010	955	900	855
	2W300	1800	1620	1470	1350	1245	1155	1080	1010	955	900	855
	2W330	1800	1620	1470	1350	1245	1155	1080	1010	955	900	855
	2W350	1800	1620	1470	1350	1245	1155	1080	1010	955	900	855
	2W370	1800	1620	1470	1350	1245	1155	1080	1010	955	900	855
	2W400	1750	1575	1430	1310	1210	1125	1050	985	925	875	830
	2W450	1650	1485	1350	1235	1140	1060	990	930	875	825	780
	2W500	1550	1395	1265	1160	1070	995	930	870	820	775	735
	2F270	1800	1615	1470	1345	1245	1155	1075	1010	950	895	850
	2F300	1800	1615	1470	1345	1245	1155	1075	1010	950	895	850
	2F330	1800	1615	1470	1345	1245	1155	1075	1010	950	895	850
	2F350	1800	1615	1470	1345	1245	1155	1075	1010	950	895	850
	2F370	1750	1570	1430	1310	1210	1120	1045	980	925	870	825
	2F400	1700	1525	1390	1270	1175	1090	1015	955	895	845	800
	3F385	1700	1530	1395	1280	1180	1100	1025	960	905	855	810
	3F430	1650	1485	1350	1240	1145	1065	995	935	880	830	785
	3F475	1600	1440	1310	1205	1110	1035	965	905	850	805	765
	3F515	1500	1350	1230	1130	1040	970	905	850	800	755	715
	3F550	1400	1260	1145	1050	970	905	845	790	745	705	665
	3F600	1350	1215	1105	1015	935	870	815	765	720	680	645
	3F650	1250	1125	1025	940	870	805	755	705	665	630	595
	3F700	1200	1080	985	900	835	775	725	680	640	605	570
	3V360	1700	1540	1410	1295	1200	1120	1050	985	930	880	835
	3V405	1650	1495	1365	1260	1165	1085	1020	955	905	855	810
	3V450	1600	1450	1325	1220	1130	1055	985	930	875	830	785
	3V490	1500	1360	1240	1145	1060	990	925	870	820	775	735
	3V525	1400	1265	1160	1070	990	920	865	810	765	725	690
	3V575	1350	1220	1115	1030	955	890	835	785	740	700	665
	3V633	1250	1130	1035	955	885	825	770	725	685	645	615
	3V688	1200	1085	995	915	850	790	740	695	655	620	590
Cushion Tire	2W270	1800	1620	1470	1350	1245	1155	1080	1010	955	900	855
	2W300	1800	1620	1470	1350	1245	1155	1080	1010	955	900	855
	2W330	1800	1620	1470	1350	1245	1155	1080	1010	955	900	855
	2W350	1800	1620	1470	1350	1245	1155	1080	1010	955	900	855
	2W370	1800	1620	1470	1350	1245	1155	1080	1010	955	900	855
	2W400	1800	1620	1470	1350	1245	1155	1080	1010	955	900	855
	2W450	1750	1575	1430	1310	1210	1125	1050	985	925	875	830
	2W500	1700	1530	1390	1275	1175	1095	1020	955	900	850	805
	2F270	1800	1615	1470	1345	1245	1155	1075	1010	950	895	850
	2F300	1800	1615	1470	1345	1245	1155	1075	1010	950	895	850
	2F330	1800	1615	1470	1345	1245	1155	1075	1010	950	895	850
	2F350	1800	1615	1470	1345	1245	1155	1075	1010	950	895	850
	2F370	1800	1615	1470	1345	1245	1155	1075	1010	950	895	850
	2F400	1800	1615	1470	1345	1245	1155	1075	1010	950	895	850
	3F385	1800	1620	1475	1355	1250	1160	1085	1020	960	905	860
	3F430	1750	1575	1435	1315	1215	1130	1055	990	930	880	835
	3F475	1650	1485	1350	1240	1145	1065	995	935	880	830	785
	3F515	1600	1440	1310	1205	1110	1035	965	905	850	805	765
	3F550	1550	1395	1270	1165	1075	1000	935	875	825	780	740
	3F600	1500	1350	1230	1130	1040	970	905	850	800	755	715
	3F650	1450	1305	1190	1090	1005	935	875	820	770	730	690
	3F700	1400	1260	1145	1050	970	905	845	790	745	705	665
	3V360	1700	1540	1410	1295	1200	1120	1050	985	930	880	835
	3V405	1650	1495	1365	1260	1165	1085	1020	955	905	855	810
	3V450	1600	1450	1325	1220	1130	1055	985	930	875	830	785
	3V490	1550	1405	1285	1180	1095	1020	955	900	850	805	760
	3V525	1500	1360	1240	1145	1060	990	925	870	820	775	735
	3V575	1450	1310	1200	1105	1025	955	895	840	795	750	715
	3V633	1400	1265	1160	1070	990	920	865	810	765	725	690
	3V688	1300	1175	1075	990	920	855	800	755	710	675	640



TX-20 / AG1N1L20Q <Side Shift - Integral Type>

Unit: kg

Load center		500mm	600	700	800	900	1000	1100	1200	1300	1400	1500	
Mast name													
Super Elastic Tire	2W270	2000	1800	1635	1500	1385	1285	1200	1125	1060	1000	950	
	2W300	2000	1800	1635	1500	1385	1285	1200	1125	1060	1000	950	
	2W330	2000	1800	1635	1500	1385	1285	1200	1125	1060	1000	950	
	2W350	2000	1800	1635	1500	1385	1285	1200	1125	1060	1000	950	
	2W370	2000	1800	1635	1500	1385	1285	1200	1125	1060	1000	950	
	2W400	1950	1755	1595	1460	1350	1255	1170	1095	1035	975	925	
	2W450	1850	1665	1515	1385	1280	1190	1110	1040	980	925	875	
	2W500	1750	1575	1430	1310	1210	1125	1050	985	925	875	830	
	2F270	2000	1795	1635	1495	1380	1285	1195	1120	1055	995	945	
	2F300	2000	1795	1635	1495	1380	1285	1195	1120	1055	995	945	
	2F330	2000	1795	1635	1495	1380	1285	1195	1120	1055	995	945	
	2F350	2000	1795	1635	1495	1380	1285	1195	1120	1055	995	945	
	2F370	1950	1750	1595	1460	1345	1250	1165	1095	1030	970	920	
	2F400	1900	1705	1550	1420	1310	1220	1135	1065	1005	945	895	
	3F385	1900	1710	1555	1430	1320	1225	1145	1075	1010	955	905	
	3F430	1850	1665	1515	1390	1285	1195	1115	1045	985	930	880	
	3F475	1750	1575	1435	1315	1215	1130	1055	990	930	880	835	
	3F515	1650	1485	1350	1240	1145	1065	995	935	880	830	785	
	3F550	1550	1395	1270	1165	1075	1000	935	875	825	780	740	
	3F600	1450	1305	1190	1090	1005	935	875	820	770	730	690	
	3F650	1350	1215	1105	1015	935	870	815	765	720	680	645	
	3F700	1200	1080	985	900	835	775	725	680	640	605	570	
	3V360	1850	1675	1530	1410	1310	1220	1140	1075	1015	960	910	
	3V405	1800	1630	1490	1375	1275	1185	1110	1045	985	935	885	
	3V450	1700	1540	1410	1295	1200	1120	1050	985	930	880	835	
	3V490	1650	1495	1365	1260	1165	1085	1020	955	905	855	810	
	3V525	1550	1405	1285	1180	1095	1020	955	900	850	805	760	
	3V575	1450	1310	1200	1105	1025	955	895	840	795	750	715	
	3V633	1350	1220	1115	1030	955	890	835	785	740	700	665	
	3V688	1200	1085	995	915	850	790	740	695	655	620	590	
	Cushion Tire	2W270	2000	1800	1635	1500	1385	1285	1200	1125	1060	1000	950
		2W300	2000	1800	1635	1500	1385	1285	1200	1125	1060	1000	950
		2W330	2000	1800	1635	1500	1385	1285	1200	1125	1060	1000	950
2W350		2000	1800	1635	1500	1385	1285	1200	1125	1060	1000	950	
2W370		2000	1800	1635	1500	1385	1285	1200	1125	1060	1000	950	
2W400		1950	1755	1595	1460	1350	1255	1170	1095	1035	975	925	
2W450		1850	1665	1515	1385	1280	1190	1110	1040	980	925	875	
2W500		1800	1620	1470	1350	1245	1155	1080	1010	955	900	855	
2F270		2000	1795	1635	1495	1380	1285	1195	1120	1055	995	945	
2F300		2000	1795	1635	1495	1380	1285	1195	1120	1055	995	945	
2F330		2000	1795	1635	1495	1380	1285	1195	1120	1055	995	945	
2F350		2000	1795	1635	1495	1380	1285	1195	1120	1055	995	945	
2F370		2000	1795	1635	1495	1380	1285	1195	1120	1055	995	945	
2F400		1950	1750	1595	1460	1345	1250	1165	1095	1030	970	920	
3F385		1900	1710	1555	1430	1320	1225	1145	1075	1010	955	905	
3F430		1850	1665	1515	1390	1285	1195	1115	1045	985	930	880	
3F475		1800	1620	1475	1355	1250	1160	1085	1020	960	905	860	
3F515		1750	1575	1435	1315	1215	1130	1055	990	930	880	835	
3F550		1700	1530	1395	1280	1180	1100	1025	960	905	855	810	
3F600		1650	1485	1350	1240	1145	1065	995	935	880	830	785	
3F650		1600	1440	1310	1205	1110	1035	965	905	850	805	765	
3F700		1500	1350	1230	1130	1040	970	905	850	800	755	715	
3V360		1850	1675	1530	1410	1310	1220	1140	1075	1015	960	910	
3V405		1800	1630	1490	1375	1275	1185	1110	1045	985	935	885	
3V450		1700	1540	1410	1295	1200	1120	1050	985	930	880	835	
3V490		1650	1495	1365	1260	1165	1085	1020	955	905	855	810	
3V525		1600	1450	1325	1220	1130	1055	985	930	875	830	785	
3V575		1550	1405	1285	1180	1095	1020	955	900	850	805	760	
3V633		1500	1360	1240	1145	1060	990	925	870	820	775	735	
3V688		1450	1310	1200	1105	1025	955	895	840	795	750	715	

## Loading Capacity Side Shift - Hook On Type

TX-13 / AS1N1L13Q <Side Shift - Hook On Type>

Unit: kg

Load center		500mm	600	700	800	900	1000	1100	1200	1300	1400	1500	
Mast name													
Super Elastic Tire	2W270	1250	1125	1025	940	870	810	755	710	670	630	600	
	2W300	1250	1125	1025	940	870	810	755	710	670	630	600	
	2W330	1250	1125	1025	940	870	810	755	710	670	630	600	
	2W350	1200	1080	985	905	835	775	725	680	640	605	575	
	2W370	1150	1035	945	865	800	745	695	655	615	580	550	
	2W400	1100	990	900	830	765	710	665	625	590	555	525	
	2W450	1050	945	860	790	730	680	635	595	560	530	505	
	2W500	1000	900	820	755	695	645	605	565	535	505	480	
	2F270	1250	1125	1025	940	870	810	755	710	665	630	595	
	2F300	1250	1125	1025	940	870	810	755	710	665	630	595	
	2F330	1200	1080	985	905	835	775	725	680	640	605	575	
	2F350	1150	1035	940	865	800	745	695	650	615	580	550	
	2F370	1100	990	900	825	765	710	665	620	585	555	525	
	2F400	1050	945	860	790	730	680	635	595	560	530	500	
	3F385	1150	1035	945	870	805	750	700	655	620	585	555	
	3F430	1100	990	905	830	770	715	670	630	590	560	530	
	3F475	1000	900	820	755	700	650	610	570	535	510	480	
	3F515	900	810	740	680	630	585	545	515	485	455	435	
	3F550	850	765	700	640	595	550	515	485	455	430	410	
	3F600	750	675	615	565	525	485	455	425	400	380	360	
	3F650	500	450	410	375	350	325	305	285	265	255	240	
	3F700	300	270	245	225	210	195	180	170	160	150	145	
	3V360	1100	995	915	845	780	730	685	645	605	575	545	
	3V405	1050	950	870	805	745	695	655	615	580	550	520	
	3V450	1000	905	830	765	710	665	620	585	550	525	495	
	3V490	900	815	745	690	640	595	560	525	495	470	445	
	3V525	850	770	705	650	605	565	530	495	470	445	420	
	3V575	750	680	620	575	530	495	465	440	415	390	370	
	3V633	500	450	415	380	355	330	310	290	275	260	245	
	3V688	300	270	245	230	210	195	185	175	165	155	145	
	Cushion Tire	2W270	1250	1125	1025	940	870	810	755	710	670	630	600
		2W300	1250	1125	1025	940	870	810	755	710	670	630	600
		2W330	1250	1125	1025	940	870	810	755	710	670	630	600
2W350		1250	1125	1025	940	870	810	755	710	670	630	600	
2W370		1200	1080	985	905	835	775	725	680	640	605	575	
2W400		1150	1035	945	865	800	745	695	655	615	580	550	
2W450		1100	990	900	830	765	710	665	625	590	555	525	
2W500		1050	945	860	790	730	680	635	595	560	530	505	
2F270		1250	1125	1025	940	870	810	755	710	665	630	595	
2F300		1250	1125	1025	940	870	810	755	710	665	630	595	
2F330		1250	1125	1025	940	870	810	755	710	665	630	595	
2F350		1200	1080	985	905	835	775	725	680	640	605	575	
2F370		1150	1035	940	865	800	745	695	650	615	580	550	
2F400		1100	990	900	825	765	710	665	620	585	555	525	
3F385		1150	1035	945	870	805	750	700	655	620	585	555	
3F430		1100	990	905	830	770	715	670	630	590	560	530	
3F475		1000	900	820	755	700	650	610	570	535	510	480	
3F515		950	855	780	715	665	615	575	540	510	485	460	
3F550		900	810	740	680	630	585	545	515	485	455	435	
3F600		850	765	700	640	595	550	515	485	455	430	410	
3F650		750	675	615	565	525	485	455	425	400	380	360	
3F700		550	495	450	415	385	355	335	315	295	280	265	
3V360		1100	995	915	845	780	730	685	645	605	575	545	
3V405		1050	950	870	805	745	695	655	615	580	550	520	
3V450		1000	905	830	765	710	665	620	585	550	525	495	
3V490		950	860	790	725	675	630	590	555	525	495	470	
3V525		900	815	745	690	640	595	560	525	495	470	445	
3V575		850	770	705	650	605	565	530	495	470	445	420	
3V633		750	680	620	575	530	495	465	440	415	390	370	
3V688		500	450	415	380	355	330	310	290	275	260	245	

TX-15 / AS1N1L15Q <Side Shift - Hook On Type>

Unit: kg

Load center		500mm	600	700	800	900	1000	1100	1200	1300	1400	1500	
Mast name													
Super Elastic Tire	2W270	1500	1350	1230	1130	1045	970	910	850	805	760	720	
	2W300	1500	1350	1230	1130	1045	970	910	850	805	760	720	
	2W330	1450	1305	1190	1095	1010	940	880	825	775	735	695	
	2W350	1450	1305	1190	1095	1010	940	880	825	775	735	695	
	2W370	1400	1260	1150	1055	975	905	845	795	750	710	670	
	2W400	1400	1260	1150	1055	975	905	845	795	750	710	670	
	2W450	1350	1215	1110	1015	940	875	815	765	720	680	645	
	2W500	1300	1170	1065	980	905	840	785	740	695	655	625	
	2F270	1500	1350	1230	1130	1045	970	905	850	800	755	715	
	2F300	1450	1305	1190	1090	1010	935	875	820	775	730	695	
	2F330	1450	1305	1190	1090	1010	935	875	820	775	730	695	
	2F350	1400	1260	1150	1055	975	905	845	795	745	705	670	
	2F370	1400	1260	1150	1055	975	905	845	795	745	705	670	
	2F400	1350	1215	1105	1015	940	870	815	765	720	680	645	
	3F385	1400	1265	1150	1060	980	910	850	800	755	710	675	
	3F430	1350	1220	1110	1020	945	880	820	770	725	685	650	
	3F475	1300	1170	1070	985	910	845	790	740	700	660	625	
	3F515	1200	1080	985	905	840	780	730	685	645	610	580	
	3F550	1100	990	905	830	770	715	670	630	590	560	530	
	3F600	850	765	700	640	595	550	515	485	455	430	410	
	3F650	650	585	535	490	455	420	395	370	350	330	310	
	3F700	450	405	370	340	315	290	270	255	240	225	215	
	3V360	1350	1225	1120	1035	960	895	840	790	745	705	670	
	3V405	1300	1180	1080	995	925	865	810	760	720	680	645	
	3V450	1250	1135	1040	960	890	830	775	730	690	655	620	
	3V490	1200	1090	995	920	855	795	745	700	665	630	595	
	3V525	1100	995	915	845	780	730	685	645	605	575	545	
	3V575	850	770	705	650	605	565	530	495	470	445	420	
	3V633	650	590	540	495	460	430	405	380	360	340	320	
	3V688	450	405	370	345	320	295	280	260	245	235	220	
	Cushion Tire	2W270	1500	1350	1230	1130	1045	970	910	850	805	760	720
		2W300	1500	1350	1230	1130	1045	970	910	850	805	760	720
		2W330	1500	1350	1230	1130	1045	970	910	850	805	760	720
2W350		1500	1350	1230	1130	1045	970	910	850	805	760	720	
2W370		1450	1305	1190	1095	1010	940	880	825	775	735	695	
2W400		1450	1305	1190	1095	1010	940	880	825	775	735	695	
2W450		1400	1260	1150	1055	975	905	845	795	750	710	670	
2W500		1350	1215	1110	1015	940	875	815	765	720	680	645	
2F270		1500	1350	1230	1130	1045	970	905	850	800	755	715	
2F300		1500	1350	1230	1130	1045	970	905	850	800	755	715	
2F330		1500	1350	1230	1130	1045	970	905	850	800	755	715	
2F350		1450	1305	1190	1090	1010	935	875	820	775	730	695	
2F370		1450	1305	1190	1090	1010	935	875	820	775	730	695	
2F400		1400	1260	1150	1055	975	905	845	795	745	705	670	
3F385		1450	1310	1195	1095	1015	945	880	830	780	740	700	
3F430		1400	1265	1150	1060	980	910	850	800	755	710	675	
3F475		1350	1220	1110	1020	945	880	820	770	725	685	650	
3F515		1250	1125	1030	945	875	815	760	715	670	635	605	
3F550		1100	990	905	830	770	715	670	630	590	560	530	
3F600		1000	900	820	755	700	650	610	570	535	510	480	
3F650		850	765	700	640	595	550	515	485	455	430	410	
3F700		600	540	490	450	420	390	365	340	320	305	290	
3V360		1350	1225	1120	1035	960	895	840	790	745	705	670	
3V405		1300	1180	1080	995	925	865	810	760	720	680	645	
3V450		1300	1180	1080	995	925	865	810	760	720	680	645	
3V490		1250	1135	1040	960	890	830	775	730	690	655	620	
3V525		1150	1040	955	880	820	765	715	675	635	600	570	
3V575		1000	905	830	765	710	665	620	585	550	525	495	
3V633		850	770	705	650	605	565	530	495	470	445	420	
3V688		600	545	495	460	425	395	370	350	330	315	295	

TX-15 / A1N1L15Q <Side Shift - Hook On Type>

Unit: kg

Load center		500mm	600	700	800	900	1000	1100	1200	1300	1400	1500	
Mast name													
Super Elastic Tire	2W270	1500	1350	1230	1130	1045	970	910	850	805	760	720	
	2W300	1500	1350	1230	1130	1045	970	910	850	805	760	720	
	2W330	1450	1305	1190	1095	1010	940	880	825	775	735	695	
	2W350	1450	1305	1190	1095	1010	940	880	825	775	735	695	
	2W370	1400	1260	1150	1055	975	905	845	795	750	710	670	
	2W400	1400	1260	1150	1055	975	905	845	795	750	710	670	
	2W450	1350	1215	1110	1015	940	875	815	765	720	680	645	
	2W500	1300	1170	1065	980	905	840	785	740	695	655	625	
	2F270	1500	1350	1230	1130	1045	970	905	850	800	755	715	
	2F300	1450	1305	1190	1090	1010	935	875	820	775	730	695	
	2F330	1450	1305	1190	1090	1010	935	875	820	775	730	695	
	2F350	1400	1260	1150	1055	975	905	845	795	745	705	670	
	2F370	1400	1260	1150	1055	975	905	845	795	745	705	670	
	2F400	1350	1215	1105	1015	940	870	815	765	720	680	645	
	3F385	1400	1265	1150	1060	980	910	850	800	755	710	675	
	3F430	1350	1220	1110	1020	945	880	820	770	725	685	650	
	3F475	1300	1170	1070	985	910	845	790	740	700	660	625	
	3F515	1200	1080	985	905	840	780	730	685	645	610	580	
	3F550	1100	990	905	830	770	715	670	630	590	560	530	
	3F600	850	765	700	640	595	550	515	485	455	430	410	
	3F650	650	585	535	490	455	420	395	370	350	330	310	
	3F700	450	405	370	340	315	290	270	255	240	225	215	
	3V360	1350	1225	1120	1035	960	895	840	790	745	705	670	
	3V405	1300	1180	1080	995	925	865	810	760	720	680	645	
	3V450	1250	1135	1040	960	890	830	775	730	690	655	620	
	3V490	1200	1090	995	920	855	795	745	700	665	630	595	
	3V525	1100	995	915	845	780	730	685	645	605	575	545	
	3V575	850	770	705	650	605	565	530	495	470	445	420	
	3V633	650	590	540	495	460	430	405	380	360	340	320	
	3V688	450	405	370	345	320	295	280	260	245	235	220	
	Cushion Tire	2W270	1500	1350	1230	1130	1045	970	910	850	805	760	720
		2W300	1500	1350	1230	1130	1045	970	910	850	805	760	720
		2W330	1500	1350	1230	1130	1045	970	910	850	805	760	720
2W350		1500	1350	1230	1130	1045	970	910	850	805	760	720	
2W370		1450	1305	1190	1095	1010	940	880	825	775	735	695	
2W400		1450	1305	1190	1095	1010	940	880	825	775	735	695	
2W450		1400	1260	1150	1055	975	905	845	795	750	710	670	
2W500		1350	1215	1110	1015	940	875	815	765	720	680	645	
2F270		1500	1350	1230	1130	1045	970	905	850	800	755	715	
2F300		1500	1350	1230	1130	1045	970	905	850	800	755	715	
2F330		1500	1350	1230	1130	1045	970	905	850	800	755	715	
2F350		1450	1305	1190	1090	1010	935	875	820	775	730	695	
2F370		1450	1305	1190	1090	1010	935	875	820	775	730	695	
2F400		1400	1260	1150	1055	975	905	845	795	745	705	670	
3F385		1450	1310	1195	1095	1015	945	880	830	780	740	700	
3F430		1400	1265	1150	1060	980	910	850	800	755	710	675	
3F475		1350	1220	1110	1020	945	880	820	770	725	685	650	
3F515		1250	1125	1030	945	875	815	760	715	670	635	605	
3F550		1100	990	905	830	770	715	670	630	590	560	530	
3F600		1000	900	820	755	700	650	610	570	535	510	480	
3F650		850	765	700	640	595	550	515	485	455	430	410	
3F700		600	540	490	450	420	390	365	340	320	305	290	
3V360		1350	1225	1120	1035	960	895	840	790	745	705	670	
3V405		1300	1180	1080	995	925	865	810	760	720	680	645	
3V450		1300	1180	1080	995	925	865	810	760	720	680	645	
3V490		1250	1135	1040	960	890	830	775	730	690	655	620	
3V525		1100	995	915	845	780	730	685	645	605	575	545	
3V575		1000	905	830	765	710	665	620	585	550	525	495	
3V633		850	770	705	650	605	565	530	495	470	445	420	
3V688		600	545	495	460	425	395	370	350	330	315	295	

TX-16 / AG1N1L16Q <Side Shift - Hook On Type>

Unit: kg

Load center		500mm	600	700	800	900	1000	1100	1200	1300	1400	1500	
Mast name													
Super Elastic Tire	2W270	1500	1350	1230	1130	1045	970	910	850	805	760	720	
	2W300	1500	1350	1230	1130	1045	970	910	850	805	760	720	
	2W330	1500	1350	1230	1130	1045	970	910	850	805	760	720	
	2W350	1500	1350	1230	1130	1045	970	910	850	805	760	720	
	2W370	1500	1350	1230	1130	1045	970	910	850	805	760	720	
	2W400	1500	1350	1230	1130	1045	970	910	850	805	760	720	
	2W450	1400	1260	1150	1055	975	905	845	795	750	710	670	
	2W500	1350	1215	1110	1015	940	875	815	765	720	680	645	
	2F270	1500	1350	1230	1130	1045	970	905	850	800	755	715	
	2F300	1500	1350	1230	1130	1045	970	905	850	800	755	715	
	2F330	1500	1350	1230	1130	1045	970	905	850	800	755	715	
	2F350	1500	1350	1230	1130	1045	970	905	850	800	755	715	
	2F370	1500	1350	1230	1130	1045	970	905	850	800	755	715	
	2F400	1450	1305	1190	1090	1010	935	875	820	775	730	695	
	3F385	1450	1310	1195	1095	1015	945	880	830	780	740	700	
	3F430	1400	1265	1150	1060	980	910	850	800	755	710	675	
	3F475	1350	1220	1110	1020	945	880	820	770	725	685	650	
	3F515	1250	1125	1030	945	875	815	760	715	670	635	605	
	3F550	1200	1080	985	905	840	780	730	685	645	610	580	
	3F600	1150	1035	945	870	805	750	700	655	620	585	555	
	3F650	1050	945	865	795	735	685	640	600	565	535	505	
	3F700	1000	900	820	755	700	650	610	570	535	510	480	
	3V360	1450	1315	1205	1110	1030	965	900	850	800	760	720	
	3V405	1400	1270	1165	1075	995	930	870	820	775	735	695	
	3V450	1350	1225	1120	1035	960	895	840	790	745	705	670	
	3V490	1250	1135	1040	960	890	830	775	730	690	655	620	
	3V525	1200	1090	995	920	855	795	745	700	665	630	595	
	3V575	1150	1040	955	880	820	765	715	675	635	600	570	
	3V633	1050	950	870	805	745	695	655	615	580	550	520	
	3V688	1000	905	830	765	710	665	620	585	550	525	495	
	Cushion Tire	2W270	1500	1350	1230	1130	1045	970	910	850	805	760	720
		2W300	1500	1350	1230	1130	1045	970	910	850	805	760	720
		2W330	1500	1350	1230	1130	1045	970	910	850	805	760	720
2W350		1500	1350	1230	1130	1045	970	910	850	805	760	720	
2W370		1500	1350	1230	1130	1045	970	910	850	805	760	720	
2W400		1500	1350	1230	1130	1045	970	910	850	805	760	720	
2W450		1450	1305	1190	1095	1010	940	880	825	775	735	695	
2W500		1400	1260	1150	1055	975	905	845	795	750	710	670	
2F270		1500	1350	1230	1130	1045	970	905	850	800	755	715	
2F300		1500	1350	1230	1130	1045	970	905	850	800	755	715	
2F330		1500	1350	1230	1130	1045	970	905	850	800	755	715	
2F350		1500	1350	1230	1130	1045	970	905	850	800	755	715	
2F370		1500	1350	1230	1130	1045	970	905	850	800	755	715	
2F400		1500	1350	1230	1130	1045	970	905	850	800	755	715	
3F385		1450	1310	1195	1095	1015	945	880	830	780	740	700	
3F430		1400	1265	1150	1060	980	910	850	800	755	710	675	
3F475		1350	1220	1110	1020	945	880	820	770	725	685	650	
3F515		1300	1170	1070	985	910	845	790	740	700	660	625	
3F550		1250	1125	1030	945	875	815	760	715	670	635	605	
3F600		1200	1080	985	905	840	780	730	685	645	610	580	
3F650		1150	1035	945	870	805	750	700	655	620	585	555	
3F700		1100	990	905	830	770	715	670	630	590	560	530	
3V360		1450	1315	1205	1110	1030	965	900	850	800	760	720	
3V405		1400	1270	1165	1075	995	930	870	820	775	735	695	
3V450		1350	1225	1120	1035	960	895	840	790	745	705	670	
3V490		1300	1180	1080	995	925	865	810	760	720	680	645	
3V525		1250	1135	1040	960	890	830	775	730	690	655	620	
3V575		1200	1090	995	920	855	795	745	700	665	630	595	
3V633		1150	1040	955	880	820	765	715	675	635	600	570	
3V688		1100	995	915	845	780	730	685	645	605	575	545	

TX-18 / A1N1L18Q <Side Shift - Hook On Type>

Unit: kg

Load center Mast name		500mm	600	700	800	900	1000	1100	1200	1300	1400	1500
		<b>Super Elastic Tire</b>										
2W270	1750	1580	1440	1320	1220	1135	1060	995	940	890	840	
2W300	1750	1580	1440	1320	1220	1135	1060	995	940	890	840	
2W330	1700	1535	1395	1285	1185	1105	1030	970	910	860	820	
2W350	1600	1440	1315	1210	1115	1040	970	910	860	810	770	
2W370	1600	1440	1315	1210	1115	1040	970	910	860	810	770	
2W400	1550	1395	1275	1170	1080	1005	940	885	830	785	745	
2W450	1500	1350	1230	1130	1045	975	910	855	805	760	720	
2W500	1400	1260	1150	1055	975	910	850	795	750	710	675	
2F270	1750	1575	1435	1320	1220	1135	1060	995	935	885	840	
2F300	1750	1575	1435	1320	1220	1135	1060	995	935	885	840	
2F330	1600	1440	1315	1205	1115	1035	970	910	855	810	765	
2F350	1600	1440	1315	1205	1115	1035	970	910	855	810	765	
2F370	1550	1395	1270	1170	1080	1005	940	880	830	785	745	
2F400	1500	1350	1230	1130	1045	970	910	850	800	760	720	
3F385	1500	1355	1235	1135	1050	980	915	860	810	765	725	
3F430	1450	1310	1195	1100	1015	945	885	830	780	740	700	
3F475	1400	1265	1155	1060	980	915	855	800	755	715	675	
3F515	1350	1220	1110	1020	945	880	825	775	730	690	655	
3F550	1200	1085	990	910	840	780	730	685	645	610	580	
3F600	900	810	740	680	630	585	550	515	485	460	435	
3V360	1450	1315	1205	1115	1035	965	905	850	805	760	725	
3V405	1450	1315	1205	1115	1035	965	905	850	805	760	725	
3V450	1400	1270	1165	1075	1000	930	875	820	775	735	700	
3V490	1350	1225	1125	1035	960	900	840	790	750	710	675	
3V525	1200	1090	1000	920	855	800	750	705	665	630	600	
3V575	900	815	750	690	640	600	560	525	500	470	450	
<b>Cushion Tire</b>												
2W270	1750	1580	1440	1320	1220	1135	1060	995	940	890	840	
2W300	1750	1580	1440	1320	1220	1135	1060	995	940	890	840	
2W330	1700	1535	1395	1285	1185	1105	1030	970	910	860	820	
2W350	1650	1490	1355	1245	1150	1070	1000	940	885	835	795	
2W370	1650	1490	1355	1245	1150	1070	1000	940	885	835	795	
2W400	1600	1440	1315	1210	1115	1040	970	910	860	810	770	
2W450	1550	1395	1275	1170	1080	1005	940	885	830	785	745	
2W500	1450	1305	1190	1095	1010	940	880	825	780	735	695	
2F270	1750	1575	1435	1320	1220	1135	1060	995	935	885	840	
2F300	1750	1575	1435	1320	1220	1135	1060	995	935	885	840	
2F330	1650	1485	1355	1245	1150	1070	1000	935	885	835	790	
2F350	1650	1485	1355	1245	1150	1070	1000	935	885	835	790	
2F370	1600	1440	1315	1205	1115	1035	970	910	855	810	765	
2F400	1550	1395	1270	1170	1080	1005	940	880	830	785	745	
3F385	1600	1445	1320	1210	1120	1045	975	915	865	815	775	
3F430	1500	1355	1235	1135	1050	980	915	860	810	765	725	
3F475	1450	1310	1195	1100	1015	945	885	830	780	740	700	
3F515	1400	1265	1155	1060	980	915	855	800	755	715	675	
3F550	1350	1220	1110	1020	945	880	825	775	730	690	655	
3F600	1150	1035	945	870	805	750	700	660	620	585	555	
3V360	1450	1315	1205	1115	1035	965	905	850	805	760	725	
3V405	1450	1315	1205	1115	1035	965	905	850	805	760	725	
3V450	1450	1315	1205	1115	1035	965	905	850	805	760	725	
3V490	1400	1270	1165	1075	1000	930	875	820	775	735	700	
3V525	1350	1225	1125	1035	960	900	840	790	750	710	675	
3V575	1150	1045	955	880	820	765	715	675	635	605	575	

TX-18 / AG1N1L18Q <Side Shift - Hook On Type>

Unit: kg

Load center		500mm	600	700	800	900	1000	1100	1200	1300	1400	1500	
Mast name													
Super Elastic Tire	2W270	1700	1535	1395	1285	1185	1105	1030	970	910	860	820	
	2W300	1700	1535	1395	1285	1185	1105	1030	970	910	860	820	
	2W330	1700	1535	1395	1285	1185	1105	1030	970	910	860	820	
	2W350	1700	1535	1395	1285	1185	1105	1030	970	910	860	820	
	2W370	1700	1535	1395	1285	1185	1105	1030	970	910	860	820	
	2W400	1650	1490	1355	1245	1150	1070	1000	940	885	835	795	
	2W450	1550	1395	1275	1170	1080	1005	940	885	830	785	745	
	2W500	1450	1305	1190	1095	1010	940	880	825	780	735	695	
	2F270	1700	1530	1395	1280	1185	1100	1030	965	910	860	815	
	2F300	1700	1530	1395	1280	1185	1100	1030	965	910	860	815	
	2F330	1700	1530	1395	1280	1185	1100	1030	965	910	860	815	
	2F350	1700	1530	1395	1280	1185	1100	1030	965	910	860	815	
	2F370	1650	1485	1355	1245	1150	1070	1000	935	885	835	790	
	2F400	1600	1440	1315	1205	1115	1035	970	910	855	810	765	
	3F385	1600	1445	1320	1210	1120	1045	975	915	865	815	775	
	3F430	1550	1400	1275	1175	1085	1010	945	890	835	790	750	
	3F475	1450	1310	1195	1100	1015	945	885	830	780	740	700	
	3F515	1400	1265	1155	1060	980	915	855	800	755	715	675	
	3F550	1300	1175	1070	985	910	845	790	745	700	665	630	
	3F600	1250	1130	1030	945	875	815	760	715	675	635	605	
	3F650	1150	1035	945	870	805	750	700	660	620	585	555	
	3F700	1100	990	905	830	770	715	670	630	595	560	530	
	3V360	1600	1450	1330	1230	1140	1065	1000	940	885	840	800	
	3V405	1550	1405	1290	1190	1105	1030	965	910	860	815	775	
	3V450	1450	1315	1205	1115	1035	965	905	850	805	760	725	
	3V490	1400	1270	1165	1075	1000	930	875	820	775	735	700	
	3V525	1300	1180	1080	1000	925	865	810	760	720	680	650	
	3V575	1250	1135	1040	960	890	830	780	735	690	655	625	
	3V633	1150	1045	955	880	820	765	715	675	635	605	575	
	3V688	1100	1000	915	845	785	730	685	645	610	575	550	
	Cushion Tire	2W270	1700	1535	1395	1285	1185	1105	1030	970	910	860	820
		2W300	1700	1535	1395	1285	1185	1105	1030	970	910	860	820
		2W330	1700	1535	1395	1285	1185	1105	1030	970	910	860	820
2W350		1700	1535	1395	1285	1185	1105	1030	970	910	860	820	
2W370		1700	1535	1395	1285	1185	1105	1030	970	910	860	820	
2W400		1700	1535	1395	1285	1185	1105	1030	970	910	860	820	
2W450		1650	1490	1355	1245	1150	1070	1000	940	885	835	795	
2W500		1600	1440	1315	1210	1115	1040	970	910	860	810	770	
2F270		1700	1530	1395	1280	1185	1100	1030	965	910	860	815	
2F300		1700	1530	1395	1280	1185	1100	1030	965	910	860	815	
2F330		1700	1530	1395	1280	1185	1100	1030	965	910	860	815	
2F350		1700	1530	1395	1280	1185	1100	1030	965	910	860	815	
2F370		1700	1530	1395	1280	1185	1100	1030	965	910	860	815	
2F400		1700	1530	1395	1280	1185	1100	1030	965	910	860	815	
3F385		1650	1490	1360	1250	1155	1075	1005	945	890	840	800	
3F430		1600	1445	1320	1210	1120	1045	975	915	865	815	775	
3F475		1550	1400	1275	1175	1085	1010	945	890	835	790	750	
3F515		1500	1355	1235	1135	1050	980	915	860	810	765	725	
3F550		1450	1310	1195	1100	1015	945	885	830	780	740	700	
3F600		1400	1265	1155	1060	980	915	855	800	755	715	675	
3F650		1350	1220	1110	1020	945	880	825	775	730	690	655	
3F700		1300	1175	1070	985	910	845	790	745	700	665	630	
3V360		1650	1500	1375	1265	1175	1100	1030	970	915	865	825	
3V405		1600	1450	1330	1230	1140	1065	1000	940	885	840	800	
3V450		1550	1405	1290	1190	1105	1030	965	910	860	815	775	
3V490		1500	1360	1250	1150	1070	1000	935	880	830	785	750	
3V525		1400	1270	1165	1075	1000	930	875	820	775	735	700	
3V575		1350	1225	1125	1035	960	900	840	790	750	710	675	
3V633		1300	1180	1080	1000	925	865	810	760	720	680	650	
3V688		1250	1135	1040	960	890	830	780	735	690	655	625	

TX-20 / AG1N1L20Q <Side Shift - Hook On Type>

Unit: kg

Load center		500mm	600	700	800	900	1000	1100	1200	1300	1400	1500	
Mast name													
Super Elastic Tire	2W270	1900	1715	1560	1435	1325	1235	1155	1085	1020	965	915	
	2W300	1900	1715	1560	1435	1325	1235	1155	1085	1020	965	915	
	2W330	1900	1715	1560	1435	1325	1235	1155	1085	1020	965	915	
	2W350	1900	1715	1560	1435	1325	1235	1155	1085	1020	965	915	
	2W370	1900	1715	1560	1435	1325	1235	1155	1085	1020	965	915	
	2W400	1850	1670	1520	1395	1290	1200	1125	1055	995	940	890	
	2W450	1750	1580	1440	1320	1220	1135	1060	995	940	890	840	
	2W500	1650	1490	1355	1245	1150	1070	1000	940	885	835	795	
	2F270	1900	1710	1560	1435	1325	1230	1150	1080	1015	960	910	
	2F300	1900	1710	1560	1435	1325	1230	1150	1080	1015	960	910	
	2F330	1900	1710	1560	1435	1325	1230	1150	1080	1015	960	910	
	2F350	1900	1710	1560	1435	1325	1230	1150	1080	1015	960	910	
	2F370	1850	1665	1520	1395	1290	1200	1120	1050	990	935	885	
	2F400	1800	1620	1480	1355	1255	1165	1090	1025	965	910	865	
	3F385	1800	1625	1485	1365	1260	1175	1100	1030	970	920	870	
	3F430	1750	1580	1440	1325	1225	1140	1065	1000	945	895	845	
	3F475	1650	1490	1360	1250	1155	1075	1005	945	890	840	800	
	3F515	1550	1400	1275	1175	1085	1010	945	890	835	790	750	
	3F550	1450	1310	1195	1100	1015	945	885	830	780	740	700	
	3F600	1350	1220	1110	1020	945	880	825	775	730	690	655	
	3F650	1250	1130	1030	945	875	815	760	715	675	635	605	
	3F700	1100	990	905	830	770	715	670	630	595	560	530	
	3V360	1750	1590	1455	1345	1250	1165	1090	1025	970	920	875	
	3V405	1700	1545	1415	1305	1210	1130	1060	1000	940	890	850	
	3V450	1600	1450	1330	1230	1140	1065	1000	940	885	840	800	
	3V490	1550	1405	1290	1190	1105	1030	965	910	860	815	775	
	3V525	1450	1315	1205	1115	1035	965	905	850	805	760	725	
	3V575	1350	1225	1125	1035	960	900	840	790	750	710	675	
	3V633	1250	1135	1040	960	890	830	780	735	690	655	625	
	3V688	1100	1000	915	845	785	730	685	645	610	575	550	
	Cushion Tire	2W270	1900	1715	1560	1435	1325	1235	1155	1085	1020	965	915
		2W300	1900	1715	1560	1435	1325	1235	1155	1085	1020	965	915
		2W330	1900	1715	1560	1435	1325	1235	1155	1085	1020	965	915
2W350		1900	1715	1560	1435	1325	1235	1155	1085	1020	965	915	
2W370		1900	1715	1560	1435	1325	1235	1155	1085	1020	965	915	
2W400		1900	1715	1560	1435	1325	1235	1155	1085	1020	965	915	
2W450		1800	1625	1480	1360	1255	1170	1095	1025	965	915	865	
2W500		1750	1580	1440	1320	1220	1135	1060	995	940	890	840	
2F270		1900	1710	1560	1435	1325	1230	1150	1080	1015	960	910	
2F300		1900	1710	1560	1435	1325	1230	1150	1080	1015	960	910	
2F330		1900	1710	1560	1435	1325	1230	1150	1080	1015	960	910	
2F350		1900	1710	1560	1435	1325	1230	1150	1080	1015	960	910	
2F370		1900	1710	1560	1435	1325	1230	1150	1080	1015	960	910	
2F400		1850	1665	1520	1395	1290	1200	1120	1050	990	935	885	
3F385		1850	1670	1525	1400	1295	1205	1130	1060	1000	945	895	
3F430		1800	1625	1485	1365	1260	1175	1100	1030	970	920	870	
3F475		1750	1580	1440	1325	1225	1140	1065	1000	945	895	845	
3F515		1700	1535	1400	1290	1190	1110	1035	975	920	870	825	
3F550		1600	1445	1320	1210	1120	1045	975	915	865	815	775	
3F600		1550	1400	1275	1175	1085	1010	945	890	835	790	750	
3F650		1500	1355	1235	1135	1050	980	915	860	810	765	725	
3F700		1400	1265	1155	1060	980	915	855	800	755	715	675	
3V360		1750	1590	1455	1345	1250	1165	1090	1025	970	920	875	
3V405		1700	1545	1415	1305	1210	1130	1060	1000	940	890	850	
3V450		1600	1450	1330	1230	1140	1065	1000	940	885	840	800	
3V490		1550	1405	1290	1190	1105	1030	965	910	860	815	775	
3V525		1500	1360	1250	1150	1070	1000	935	880	830	785	750	
3V575		1450	1315	1205	1115	1035	965	905	850	805	760	725	
3V633		1400	1270	1165	1075	1000	930	875	820	775	735	700	
3V688		1350	1225	1125	1035	960	900	840	790	750	710	675	



**Truck Weight (Less Battery)**

**Standard Fork**

Unit: kg

Mast type	Mast name	TX-13		TX-15		TX-15		TX-18		TX-16		TX-18		TX-20	
		AS1N1				A1N1				AG1N1					
		Super Elastic	Cushion	Super Elastic	Cushion	Super Elastic	Cushion	Super Elastic	Cushion	Super Elastic	Cushion	Super Elastic	Cushion	Super Elastic	Cushion
Two stage (Wide view 2W)	2W 270	2165	2190	2355	2380	2190	2215	2390	2410	2110	2135	2145	2140	2280	2280
	2W 300	2180	2210	2370	2400	2210	2230	2410	2430	2130	2155	2160	2160	2300	2300
	2W 330	2200	2230	2390	2420	2230	2250	2430	2450	2150	2175	2180	2180	2320	2320
	2W 350	2220	2250	2410	2440	2250	2270	2445	2470	2170	2190	2200	2200	2340	2340
	2W 370	2255	2280	2445	2470	2285	2305	2480	2500	2205	2225	2235	2235	2375	2370
	2W 400	2280	2310	2470	2500	2310	2330	2505	2530	2230	2250	2260	2260	2400	2400
	2W 450	2315	2340	2505	2530	2340	2365	2540	2560	2260	2285	2295	2290	2430	2430
2W 500	2345	2375	2535	2565	2375	2395	2575	2595	2295	2315	2325	2325	2465	2465	
Two stage (Full free 2F)	2F 270	2175	2205	2365	2395	2205	2225	2405	2425	2125	2145	2155	2155	2295	2295
	2F 300	2195	2225	2385	2415	2225	2245	2425	2445	2145	2170	2175	2175	2315	2315
	2F 330	2215	2245	2405	2435	2245	2265	2445	2465	2165	2190	2195	2195	2335	2335
	2F 350	2235	2265	2425	2455	2265	2285	2465	2485	2185	2205	2215	2215	2355	2355
	2F 370	2270	2295	2460	2485	2300	2320	2495	2515	2220	2240	2250	2250	2390	2385
	2F 400	2295	2325	2485	2515	2325	2345	2525	2545	2245	2265	2275	2275	2415	2415
Three stage (Full free 3F)	3F 385	2345	2370	2535	2560	2370	2395	2570	2590	2290	2315	2325	2320	2460	2460
	3F 430	2375	2400	2565	2590	2405	2425	2600	2620	2325	2345	2355	2355	2495	2490
	3F 475	2405	2430	2595	2620	2435	2455	2630	2650	2355	2375	2385	2385	2525	2520
	3F 515	2430	2460	2620	2650	2460	2480	2660	2680	2380	2400	2410	2410	2550	2550
	3F 550	2485	2515	2675	2705	2515	2535	2715	2735	2435	2455	2465	2465	2605	2605
	3F 600	2525	2550	2715	2740	2555	2575	2750	2770	2475	2495	2505	2505	2645	2640
	3F 650	2575	2600	2765	2790	2600	2625	-	-	2520	2545	2555	2550	2690	2690
	3F 700	2620	2650	2810	2840	2650	2670	-	-	2570	2595	2600	2600	2740	2740
	3V 360	2340	2370	2530	2560	2370	2390	2565	2590	2290	2310	2320	2320	2460	2460
Three stage (Opt view 3V)	3V 405	2370	2395	2560	2585	2395	2420	2595	2615	2320	2340	2350	2350	2485	2485
	3V 450	2400	2425	2590	2615	2430	2450	2625	2645	2350	2370	2380	2380	2520	2515
	3V 490	2425	2455	2615	2645	2455	2475	2650	2675	2375	2395	2405	2405	2545	2545
	3V 525	2485	2515	2675	2705	2515	2535	2710	2735	2435	2455	2465	2465	2605	2605
	3V 575	2525	2550	2715	2740	2550	2575	2750	2770	2475	2495	2505	2505	2640	2640
	3V 633	2575	2600	2765	2790	2600	2625	-	-	2520	2545	2550	2550	2690	2690
	3V 688	2620	2650	2810	2840	2650	2670	-	-	2570	2595	2600	2600	2740	2740
	Service Weight (without mast)	1660	1685	1850	1875	1680	1710	1880	1900	1610	1630	1630	1630	1740	1740

**Side Shift - Integral Type**

Unit: kg

		TX-13		TX-15		TX-15		TX-18		TX-16		TX-18		TX-20	
		AS1N1				A1N1				AG1N1					
		Super Elastic	Cushion	Super Elastic	Cushion	Super Elastic	Cushion	Super Elastic	Cushion	Super Elastic	Cushion	Super Elastic	Cushion	Super Elastic	Cushion
Two stage (Wide view 2W)	2W 270	2205	2235	2395	2425	2225	2255	2430	2455	2155	2175	2185	2185	2325	2325
	2W 300	2225	2250	2415	2440	2245	2275	2450	2470	2175	2195	2205	2205	2345	2340
	2W 330	2245	2270	2435	2460	2265	2295	2470	2490	2195	2215	2225	2225	2365	2360
	2W 350	2260	2290	2450	2480	2285	2310	2490	2510	2210	2235	2240	2240	2380	2380
	2W 370	2295	2325	2485	2515	2320	2345	2525	2545	2245	2265	2275	2275	2415	2415
	2W 400	2320	2350	2510	2540	2345	2370	2550	2570	2270	2290	2300	2300	2440	2440
	2W 450	2355	2380	2545	2570	2375	2405	2580	2600	2305	2325	2335	2335	2475	2470
2W 500	2385	2415	2575	2605	2410	2435	2615	2635	2335	2360	2365	2365	2505	2505	
Two stage (Full free 2F)	2F 270	2215	2245	2405	2435	2240	2265	2445	2465	2165	2185	2195	2195	2335	2335
	2F 300	2235	2265	2425	2455	2260	2285	2465	2485	2185	2210	2215	2215	2355	2355
	2F 330	2255	2285	2445	2475	2280	2305	2485	2505	2205	2230	2235	2235	2375	2375
	2F 350	2275	2305	2465	2495	2300	2325	2505	2525	2225	2245	2255	2255	2395	2395
	2F 370	2310	2335	2500	2525	2330	2360	2535	2555	2260	2280	2290	2290	2430	2425
	2F 400	2335	2365	2525	2555	2355	2385	2560	2585	2285	2305	2315	2315	2455	2455
Three stage (Full free 3F)	3F 385	2385	2415	2575	2605	2405	2435	2610	2635	2335	2355	2365	2365	2505	2505
	3F 430	2415	2445	2605	2635	2435	2465	2640	2665	2365	2385	2395	2395	2535	2535
	3F 475	2445	2475	2635	2665	2470	2495	2675	2695	2395	2415	2425	2425	2565	2565
	3F 515	2470	2500	2660	2690	2495	2520	2700	2720	2420	2445	2450	2450	2590	2590
	3F 550	2525	2555	2715	2745	2550	2575	2755	2775	2475	2500	2505	2505	2645	2645
	3F 600	2565	2595	2755	2785	2590	2615	2795	2815	2515	2535	2545	2545	2685	2685
	3F 650	2615	2645	2805	2835	2635	2665	-	-	2565	2585	2595	2595	2735	2735
	3F 700	2665	2690	2855	2880	2685	2715	-	-	2610	2635	2645	2640	2780	2780
	3V 360	2390	2415	2580	2605	2410	2440	2615	2635	2335	2360	2370	2365	2505	2505
Three stage (Opt view 3V)	3V 405	2415	2445	2605	2635	2440	2465	2645	2665	2365	2390	2395	2395	2535	2535
	3V 450	2450	2475	2640	2665	2470	2500	2675	2695	2395	2420	2425	2425	2565	2565
	3V 490	2475	2500	2665	2690	2495	2525	2700	2720	2420	2445	2455	2450	2590	2590
	3V 525	2535	2560	2725	2750	2555	2585	2760	2780	2485	2505	2515	2515	2655	2650
	3V 575	2570	2600	2760	2790	2595	2620	2800	2820	2520	2545	2550	2550	2690	2690
	3V 633	2620	2650	2810	2840	2645	2670	-	-	2570	2590	2600	2600	2740	2740
	3V 688	2670	2700	2860	2890	2690	2720	-	-	2620	2640	2650	2650	2790	2790
	Service Weight (without mast)	1660	1685	1850	1875	1690	1710	1880	1900	1610	1630	1630	1630	1770	1770

### Side Shift - Hook On Type

Unit: kg

Mast type	Mast name	TX-13		TX-15		TX-15		TX-18		TX-16		TX-18		TX-20	
		AS1N1				A1N1				AG1N1					
		Super Elastic	Cushion	Super Elastic	Cushion	Super Elastic	Cushion	Super Elastic	Cushion	Super Elastic	Cushion	Super Elastic	Cushion	Super Elastic	Cushion
Two stage (Wide view 2W)	2W 270	2220	2245	2410	2435	2240	2270	2445	2465	2165	2190	2200	2195	2335	2335
	2W 300	2240	2265	2430	2455	2260	2290	2465	2485	2185	2210	2220	2215	2355	2355
	2W 330	2260	2285	2450	2475	2280	2310	2485	2505	2205	2230	2240	2235	2375	2375
	2W 350	2275	2305	2465	2495	2295	2325	2500	2525	2225	2245	2255	2255	2395	2395
	2W 370	2310	2340	2500	2530	2330	2360	2535	2560	2260	2280	2290	2290	2430	2430
	2W 400	2335	2365	2525	2555	2355	2385	2560	2585	2285	2305	2315	2315	2455	2455
	2W 450	2370	2395	2560	2585	2390	2420	2595	2615	2315	2340	2350	2345	2485	2485
2W 500	2400	2430	2590	2620	2425	2450	2630	2650	2350	2370	2380	2380	2520	2520	
Two stage (Full free 2F)	2F 270	2230	2260	2420	2450	2255	2280	2460	2480	2180	2200	2210	2210	2350	2350
	2F 300	2250	2280	2440	2470	2275	2300	2480	2500	2200	2225	2230	2230	2370	2370
	2F 330	2270	2300	2460	2490	2295	2320	2500	2520	2220	2245	2250	2250	2390	2390
	2F 350	2290	2320	2480	2510	2315	2340	2520	2540	2240	2260	2270	2270	2410	2410
	2F 370	2325	2350	2515	2540	2345	2375	2550	2570	2275	2295	2305	2305	2445	2440
	2F 400	2350	2380	2540	2570	2375	2400	2580	2600	2300	2320	2330	2330	2470	2470
Three stage (Full free 3F)	3F 385	2405	2430	2595	2620	2425	2455	2630	2650	2355	2375	2385	2385	2525	2520
	3F 430	2435	2460	2625	2650	2455	2485	2660	2680	2385	2405	2415	2415	2555	2550
	3F 475	2465	2495	2655	2685	2485	2515	2690	2715	2415	2435	2445	2445	2585	2585
	3F 515	2490	2520	2680	2710	2515	2540	2720	2740	2440	2460	2470	2470	2610	2610
	3F 550	2545	2575	2735	2765	2570	2595	2775	2795	2495	2515	2525	2525	2665	2665
	3F 600	2585	2615	2775	2805	2605	2635	2810	2835	2535	2555	2565	2565	2705	2705
	3F 650	2635	2660	2825	2850	2655	2685	-	-	2580	2605	2615	2610	2750	2750
	3F 700	2680	2710	2870	2900	2705	2730	-	-	2630	2655	2660	2660	2800	2800
Three stage (Opti view 3V)	3V 360	2400	2425	2590	2615	2420	2450	2625	2645	2350	2370	2380	2380	2520	2515
	3V 405	2430	2455	2620	2645	2450	2480	2655	2675	2375	2400	2410	2410	2545	2545
	3V 450	2460	2485	2650	2675	2480	2510	2685	2705	2410	2430	2440	2440	2575	2575
	3V 490	2485	2515	2675	2705	2505	2535	2710	2735	2435	2455	2465	2465	2605	2605
	3V 525	2545	2575	2735	2765	2570	2595	2770	2795	2495	2515	2525	2525	2665	2665
	3V 575	2585	2610	2775	2800	2605	2635	2810	2830	2530	2555	2565	2560	2700	2700
	3V 633	2630	2660	2820	2850	2655	2680	-	-	2580	2605	2610	2610	2750	2750
3V 688	2680	2710	2870	2900	2705	2730	-	-	2630	2650	2660	2660	2800	2800	
Service Weight (without mast)		1660	1685	1850	1875	1690	1710	1880	1900	1610	1630	1630	1630	1770	1770

### Additional Truck Weight

#### Backrest

Unit: kg

Model	TX-13	TX-15	TX-15	TX-18	TX-16	TX-18	TX-20
	AS1N1		A1N1		AG1N1		
Less	-25	-25	-25	-25	-25	-25	-25
Standard	0	0	0	0	0	0	0
High	+10	+10	+10	+10	+10	+10	+10

#### Forks

Unit: kg

Model	TX-13	TX-15	TX-15	TX-18	TX-16	TX-18	TX-20
	AS1N1		A1N1		AG1N1		
Less forks	-80	-80	-80	-90	-80	-90	-90
900 (35.4)	0	0	0	0	0	0	0
1000 (39.4)	+5	+5	+5	+5	+5	+5	+5
1100 (43.3)	+10	+10	+10	+10	+10	+10	+10
1200 (47.2)	+20	+20	+20	+20	+20	+20	+20
1300 (51.2)	+25	+25	+25	+25	+25	+25	+25

**Supplement Data**

Item	Model			TX-13	TX-15	TX-15	TX-18	TX-16	TX-18	TX-20	
				AS1N1		A1N1		AG1N1			
				1.25t	1.5t	1.5t	1.75t	1.6t	1.8t	2.0t	
DIMENSIONS	Or	Rear overhang		mm	225	225	225	225	225	225	225
	Tf	Front tread	Pneumatic solid	mm	913	913	913	913	933	930	930
			Cushion	mm	930	930	930	930	930	930	930
	As	Right angle stacking aisle width		mm	1785	1785	1890	1895	1995	2005	2005
	Ai	Right angle intersecting aisle width		mm	1635	1635	1685	1685	1735	1735	1735
	Hf	Floor height		mm	545	545	545	545	545	545	545
	Hh	Head room		mm	1127	1127	1127	1127	1127	1127	1127
	Hc	Counterweight height		mm	906	906	906	906	906	906	906
	Sw	Max. fork spread		mm	910	910	910	910	910	910	910
	Sn	Min. fork spread		mm	205	205	205	205	205	205	205
	Gf	Ground clearance	Under frame	mm	100	100	100	100	100	100	100
	$\theta r$	Ramp breakover angle		tan $\theta$ %	35	35	32	32	29	29	29
	$\theta d$	Departure angle		tan $\theta$ %	65	65	65	65	65	65	65
$\theta a$	Approach angle		tan $\theta$ %	27	27	27	27	27	27	27	
PERFORMANCE	Lifting speed	2W Mast	full load	mm/sec	330	300	300	270	400	370	350
			no load	mm/sec	500	500	500	500	600	600	600
		2F Mast	full load	mm/sec	310	290	290	270	390	370	350
			no load	mm/sec	445	445	445	445	520	520	520
		3F Mast	full load	mm/sec	310	290	290	270	390	370	350
			no load	mm/sec	445	445	445	445	520	520	520
		3V Mast	full load	mm/sec	300	270	270	245	360	340	330
			no load	mm/sec	420	420	420	420	500	500	500
	Lowering speed	2W Mast	full load	mm/sec	500	500	500	500	500	500	500
			no load	mm/sec	500	500	500	500	500	500	500
		2F Mast	full load	mm/sec	480	480	480	480	480	480	480
			no load	mm/sec	310	310	310	310	310	310	310
		3F Mast	full load	mm/sec	480	480	480	480	480	480	480
			no load	mm/sec	370	370	370	370	370	370	370
		3V Mast	full load	mm/sec	480	480	480	480	480	480	480
			no load	mm/sec	370	370	370	370	370	370	370
	Travel speed	reverse	full load	km/h	13.5	13.5	13.5	13.5	15	15	15
			no load	km/h	13.5	13.5	13.5	13.5	16	16	16
	Drawbar pull		full load	N	10500	10500	10500	10500	10500	10500	10500
			no load	N	10500	10500	10500	10500	10500	10500	10500
Front Tire size		Pneumatic solid		18x7-8	18x7-8	18x7-8	18x7-8	18x7-8	200/50-10	200/50-10	
		Cushion		18 X 7 X 12-1/8	18 X 7 X 12-1/8	18 X 7 X 12-1/8	18 X 7 X 12-1/8	18 X 7 X 12-1/8	18 X 7 X 12-1/8	18 X 7 X 12-1/8	
WEIGHT	Truck weight (without battery)		Service weight	kg	2180	2370	2210	2410	2130	2160	2300
	Weight distribution *1	no load	front axle	kg	1370	1405	1455	1465	1575	1675	1665
			rear axle	kg	1360	1615	1465	1655	1485	1585	1735
		full load	front axle	kg	3530	3995	3955	4390	4160	4590	4905
			rear axle	kg	450	525	465	480	500	470	495
MOTOR	Traction motor		Type		AC induction						
	Traction motor performance, 60 minute rating		Output	kW	7.1 x 2	7.1 x 2	7.1 x 2	7.1 x 2	7.1 x 2	7.1 x 2	7.1 x 2
			Control type		MOS-FET inverter control						
	Hoist pump motor		Type		AC induction						
	Hoist pump motor performance 20% rating		Output	kW	14.5	14.5	14.5	14.5	14.6	14.6	14.6
			Control type		MOS-FET inverter control						
VOLTAGE				V	48	48	48	48	48	48	

## Right Angle Stacking Aisle

### 2W MAST

Model		TX-13			TX-15			TX-15			TX-18			TX-15			TX-18			TX-20			
		AS1N1						A1N1						AG1N1									
Pallet	Length (m)	1.000	0.800	1.200	1.000	0.800	1.200	1.000	0.800	1.200	1.000	0.800	1.200	1.000	0.800	1.200	1.000	0.800	1.200	1.000	0.800	1.200	
	Width (m)	1.200	1.200	0.800	1.200	1.200	0.800	1.200	1.200	0.800	1.200	1.200	0.800	1.200	1.200	0.800	1.200	1.200	0.800	1.200	1.200	0.800	1.200
Wa	Turning Radius (mm)	1.420	1.420	1.420	1.420	1.420	1.420	1.525	1.525	1.525	1.525	1.525	1.525	1.635	1.635	1.635	1.635	1.635	1.635	1.635	1.635	1.635	1.635
a	Room (m)	0.200	0.200	0.200	0.200	0.200	0.200	0.200	0.200	0.200	0.200	0.200	0.200	0.200	0.200	0.200	0.200	0.200	0.200	0.200	0.200	0.200	0.200
R	(m)	1.490	1.310	1.615	1.490	1.310	1.615	1.490	1.310	1.615	1.495	1.315	1.620	1.490	1.310	1.615	1.495	1.315	1.620	1.495	1.315	1.620	1.495
Ast	=Wa + R + a [m] (m)	3.110	2.930	3.235	3.110	2.930	3.235	3.215	3.035	3.340	3.220	3.040	3.345	3.325	3.145	3.450	3.330	3.150	3.455	3.330	3.150	3.455	3.330

### 2F MAST

Model		TX-13			TX-15			TX-15			TX-18			TX-15			TX-18			TX-20				
		AS1N1						A1N1						AG1N1										
Pallet	Length (m)	1.000	0.800	1.200	1.000	0.800	1.200	1.000	0.800	1.200	1.000	0.800	1.200	1.000	0.800	1.200	1.000	0.800	1.200	1.000	0.800	1.200	1.000	
	Width (m)	1.200	1.200	0.800	1.200	1.200	0.800	1.200	1.200	0.800	1.200	1.200	0.800	1.200	1.200	0.800	1.200	1.200	0.800	1.200	1.200	0.800	1.200	1.200
Wa	Turning Radius (mm)	1.420	1.420	1.420	1.420	1.420	1.420	1.525	1.525	1.525	1.525	1.525	1.525	1.635	1.635	1.635	1.635	1.635	1.635	1.635	1.635	1.635	1.635	1.635
a	Room (m)	0.200	0.200	0.200	0.200	0.200	0.200	0.200	0.200	0.200	0.200	0.200	0.200	0.200	0.200	0.200	0.200	0.200	0.200	0.200	0.200	0.200	0.200	0.200
R	(m)	1.485	1.305	1.610	1.485	1.305	1.610	1.485	1.305	1.610	1.490	1.310	1.615	1.485	1.305	1.610	1.490	1.310	1.615	1.490	1.310	1.615	1.490	
Ast	=Wa + R + a [m] (m)	3.105	2.925	3.230	3.105	2.925	3.230	3.210	3.030	3.335	3.215	3.035	3.340	3.320	3.140	3.445	3.325	3.145	3.450	3.325	3.145	3.450	3.325	

### 3F MAST

Model		TX-13			TX-15			TX-15			TX-18			TX-15			TX-18			TX-20				
		AS1N1						A1N1						AG1N1										
Pallet	Length (m)	1.000	0.800	1.200	1.000	0.800	1.200	1.000	0.800	1.200	1.000	0.800	1.200	1.000	0.800	1.200	1.000	0.800	1.200	1.000	0.800	1.200	1.000	
	Width (m)	1.200	1.200	0.800	1.200	1.200	0.800	1.200	1.200	0.800	1.200	1.200	0.800	1.200	1.200	0.800	1.200	1.200	0.800	1.200	1.200	0.800	1.200	1.200
Wa	Turning Radius (mm)	1.420	1.420	1.420	1.420	1.420	1.420	1.525	1.525	1.525	1.525	1.525	1.525	1.635	1.635	1.635	1.635	1.635	1.635	1.635	1.635	1.635	1.635	1.635
a	Room (m)	0.200	0.200	0.200	0.200	0.200	0.200	0.200	0.200	0.200	0.200	0.200	0.200	0.200	0.200	0.200	0.200	0.200	0.200	0.200	0.200	0.200	0.200	0.200
R	(m)	1.505	1.325	1.630	1.505	1.325	1.630	1.505	1.325	1.630	1.510	1.330	1.635	1.505	1.325	1.630	1.510	1.330	1.635	1.510	1.330	1.635	1.510	
Ast	=Wa + R + a [m] (m)	3.125	2.945	3.250	3.125	2.945	3.250	3.230	3.050	3.355	3.235	3.055	3.360	3.340	3.160	3.465	3.345	3.165	3.470	3.345	3.165	3.470	3.345	

### 3V MAST

Model		TX-13			TX-15			TX-15			TX-18			TX-15			TX-18			TX-20				
		AS1N1						A1N1						AG1N1										
Pallet	Length (m)	1.000	0.800	1.200	1.000	0.800	1.200	1.000	0.800	1.200	1.000	0.800	1.200	1.000	0.800	1.200	1.000	0.800	1.200	1.000	0.800	1.200	1.000	
	Width (m)	1.200	1.200	0.800	1.200	1.200	0.800	1.200	1.200	0.800	1.200	1.200	0.800	1.200	1.200	0.800	1.200	1.200	0.800	1.200	1.200	0.800	1.200	1.200
Wa	Turning Radius (mm)	1.420	1.420	1.420	1.420	1.420	1.420	1.525	1.525	1.525	1.525	1.525	1.525	1.635	1.635	1.635	1.635	1.635	1.635	1.635	1.635	1.635	1.635	1.635
a	Room (m)	0.200	0.200	0.200	0.200	0.200	0.200	0.200	0.200	0.200	0.200	0.200	0.200	0.200	0.200	0.200	0.200	0.200	0.200	0.200	0.200	0.200	0.200	0.200
R	(m)	1.555	1.375	1.685	1.555	1.375	1.685	1.555	1.375	1.685	1.560	1.380	1.690	1.555	1.375	1.685	1.560	1.380	1.690	1.560	1.380	1.690	1.560	
Ast	=Wa + R + a [m] (m)	3.175	2.995	3.305	3.175	2.995	3.305	3.280	3.100	3.410	3.285	3.105	3.415	3.390	3.210	3.520	3.395	3.215	3.525	3.395	3.215	3.525	3.395	

\*Each unit is indicated within ().

**Option Availability**

			●...Standard ○...Option						
			TX-13	TX-15	TX-15	TX-18	TX-16	TX-18	TX-20
			AS1N1	A1N1		AG1N1			
Mast	Mast type	Two stage wide view (2W)	●	●	●	●	●	●	●
		Two stage full free (2F)	○	○	○	○	○	○	○
		Three stage full free (3F)	○	○	○	○	○	○	○
		Three stage opti view (3V)	○	○	○	○	○	○	○
	Mast protector	-	-	-	-	-	-	-	
Side Shifter	Integral Side Shift	○	○	○	○	○	○	○	
	Hook-on Side Shift	○	○	○	○	○	○	○	
Fork		Long fork	○	○	○	○	○	○	
Carriage & backrest		Standard backrest	●	●	●	●	●	●	
		High backrest	○	○	○	○	○	○	
		Less backrest	○	○	○	○	○	○	
Hydraulic control	Control system	Mechanical control	●	●	●	●	●	●	
		Electric proportional control	○	○	○	○	○	○	
	Spool no.	3-spool	●	●	●	●	●	●	
		4-spool	○	○	○	○	○	○	
	Lever arrangement	Twin control lever	●	●	●	●	●	●	
		Single control lever	○*1	○*1	○*1	○*1	○*1	○*1	
Piping to CRG	3-spool piping	○	○	○	○	○	○		
	4-spool piping	○	○	○	○	○	○		
Brake system	Service brake	Electrical	Neutral brake	●	●	●	●	●	
			Switch back brake	●	●	●	●	●	
		Foot brake	●	●	●	●	●		
	Hydraulic	Wet Disc type	●	●	●	●	●		
		Parking brake	With warning	●	●	●	●	●	
Steering system		Fully hydraulic power steering	●	●	●	●	●		
		Small diameter steering wheel	●	●	●	●	●		
		High position steering wheel	○	○	○	○	○		
		Tilting steering	●	●	●	●	●		
		Knob position control system	○	○	○	○	○		
Light & alarm	Light	Head light	●	●	●	●	●		
		Turn signal light	●	●	●	●	●		
		Rear combination light	●	●	●	●	●		
		Back operation light	○	○	○	○	○		
		Flash light	○	○	○	○	○		
	Alarm	Back-up buzzer	●	●	●	●	●		
		Warning buzzer	●	●	●	●	●		
Instruments		Battery capacity meter	●	●	●	●	●		
		Speed / rear wheel angle indicator	●	●	●	●	●		
		Hour meter (2-mode)	●	●	●	●	●		
		Time & day of week	●	●	●	●	●		
		Brake warnig	●	●	●	●	●		
		Seat belt warning	●	●	●	●	●		
		Selected power mode	●	●	●	●	●		
Tire		Super Elastic	●	●	●	●	●		
		Super Elastic (Non-marking)	○	○	○	○	○		
		Cushion	○	○	○	○	○*4		
Control system	Drive control	AC inverter motor control	●	●	●	●	●		
		3-mode regenerative brake	●	●	●	●	●		
		Acceleration "Fuzzy" control	●	●	●	●	●		
	Loading control	AC inverter motor control	●	●	●	●	●		
		Finger-tip control	○	○	○	○	○		
		Pump cut	●	●	●	●	●		
		Inhibitor system	●	●	●	●	●		
		Power mode change	○	○	○	○	○		
		Secret Code access	○*2	○*2	○*2	○*2	○*2		
		Trouble diagnosis	●	●	●	●	●		
	Self-check system	●	●	●	●	●			
Performance	Drive & Loading	High performance	-	-	○	○	●		
Battery		Less battery	●	●	●	●	●		
		Battery case	○	○	○	○	○		
Cold strage		-35°C	○	○	○	○	○		
Body		Rain guard (Plastic type)	○	○	○	○	○		
		Rear view mirror	●	●	●	●	●		
		Room mirror	○*3	○*3	○*3	○*3	○*3		
		High overhead guard	●	●	●	●	●		
		Low overhead guard	○	○	○	○	○		
Seat		Steel Cabin	○	○	○	○	○		
		Reclining+ Suspension (Vinyl)	●	●	●	●	●		
	Reclining+ Suspension (Cloth)	○	○	○	○	○			
Tool		Less	●	●	●	●	●		

\*1 : "Finger-tip control" only.  
 \*2 : To be activated by DB locally.  
 \*3 : Combined with "Steel Cabin" only.  
 \*4 : For FR tire

## Fork Availability

●...Standard ○...Option

Model		TX-13	TX-15	TX-15	TX-18	TX-16	TX-18	TX-20
		AS1N1		A1N1		AG1N1		
Length (mm)								
Fork	Less forks	○	○	○	○	○	○	○
	900	●	●	●	●	●	●	●
	1000	○	○	○	○	○	○	○
	1100	○	○	○	○	○	○	○
	1200	○	○	○	○	○	○	○
	1300	○	○	○	○	○	○	○

## Fork Dimensions

	Width [W] x Thickness [T] mm	
	TX 13-16	TX 18-20
All length	100 x 35	100 x 40

## Carriage & Backrest Dimensions

### ■ CARRIAGE

Unit: mm

Model	TX 13-20	
Class	Class II	
Number of rollers (not include side rollers)	6	
Carriage Width [W] mm	Standard	920
	Wide	-
Max. Fork Spread mm	Standard	910
	Wide	-

### ■ BACKREST

Model		TX 13-16	TX 18-20
Backrest height [H] mm	Standard	910	905
	High backrest	1225	1220
	Wide backrest	-	-
Backrest width [W] mm	Standard & High backrest	945	
	Wide backrest	-	-
Plate Thickness [T] mm		12	

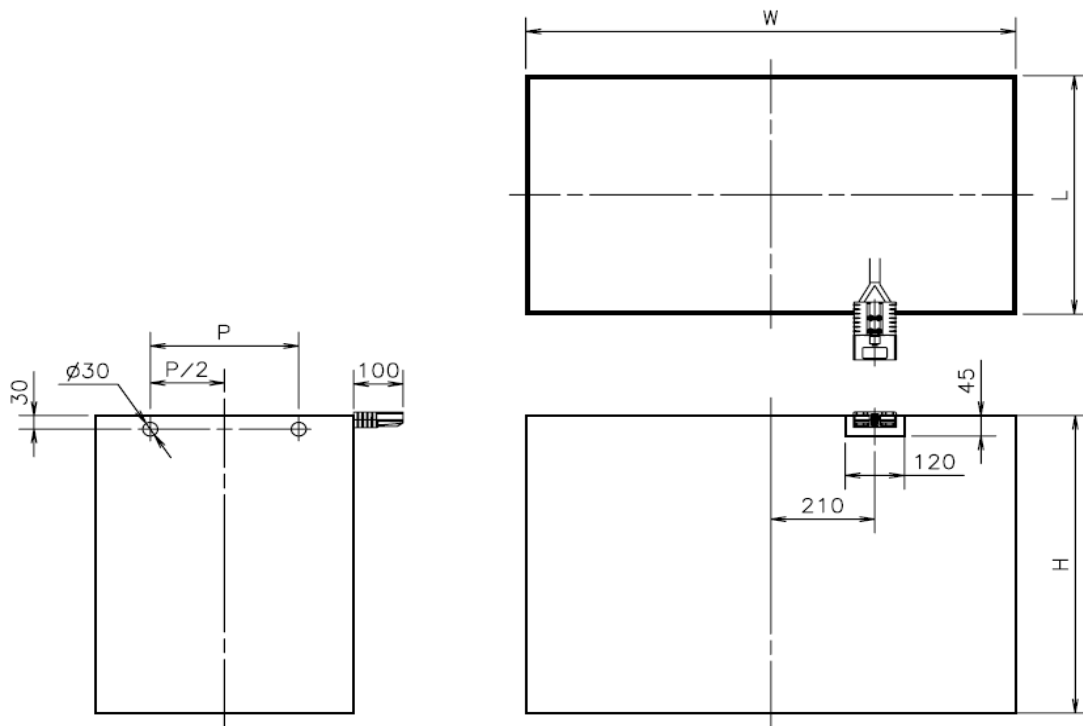
## Tire Size

●...Standard ○...Option

Tire		Model	TX-13	TX-15	TX-15	TX-18	TX-16	TX-18	TX-20
		AS1N1		A1N1		AG1N1			
Front	Single	Tire size (Super Elastic)	18 x 7-8		18 x 7-8		18 x 7-8	200/50-10	
		Rim size (Super Elastic)	4.33R-8		4.33R-8		4.33R-8	6.50F-10	
		Tire size (Cushion)	18 x 7 x 12-1/8		18 x 7 x 12-1/8		18 x 7 x 12-1/8		
	Type	Super Elastic	●	●	●	●	●	●	●
		Clean (White)	○	○	○	○	○	○	○
		Cushion	○	○	○	○	○	○	○
Rear	-	Tire size (Super Elastic)	15 x 4.5-8	140/55-9	15 x 4.5-8	140/55-9	140/55-9		
		Rim size (Super Elastic)	3.00D-8	4.00E-9	3.00D-8	4.00E-9	4.00E-9		
		Tire size (Cushion)	15 x 5 x 11-1/4		15 x 5 x 11-1/4		-		
	Type	Pneumatic Solid	●	●	●	●	●	●	●
		Clean (White)	○	○	○	○	○	○	○
		Cushion	○	○	○	○	-	-	-

## Recommended Battery Case

			TX-13	TX-15	TX-15	TX-18	TX-16	TX-18	TX-20	
			AS1N1		A1N1		AG1N1			
Dimension of battery compartment			Width	mm		1005	1005	1005		
			Length	mm		425	530	640		
			Height	mm		655	655	655		
Recommended battery case	Width	W	mm		990	990	990			
	Length	L	mm		417	522	632			
	Height	H	mm		645	645	645			
	Hook hole pitch	P	mm		230	300	350			
Effective battery weight			Min.	kg		520	650	675	900	1050
			Max.			765		900	1150	1100
Battery connector type			CE area	Anderson SBE 320 (BLUE)						
			GOM area	Anderson SB 350 (GRAY)						
Optional battery	Truck voltage	V		48		48		48		
	Number of cell	PCS		24		24		24		
	Capacity	AH/5h		375	430	460	625	750		





## Unit Specification

		TX-13 TX-15	TX-15 TX-18	TX-16 TX-18 TX-20
		AS1N1	A1N1	AG1N1
CONTROLLER	Traction	Control	Micro-computer MOS-FET inverter control	
		Field weakening system	Not equipped	
	Hoist	Control	Micro-computer MOS-FET inverter control	
TRACTION MOTOR	Type	AC Induction		
	Rated output (S2 60min)	7.1 / 48V		
HOIST PUMP MOTOR	Type	AC Induction		
	Rated output (S3 20%)	14.5-48V	14.6-48V	
STEERING SYSTEM	Type	Fully hydrostatic power steering		
	Steering wheel	Tilting type		
DRIVE AXLE	Type	Half floating		
	Reduction gear type	Planetary		
STEERING AXLE	Type	Pivot type		
	Suspension type	Rack & pinion		
BRAKE SYSTEM	Service brake	Hydraulic, Wet disk in Drive unit		
	Parking brake	Dead point lock type		
	Disk material	Non-asbestos		
FRAME & BODY	Frame structure	Integral, All welded frame		
	Overhead guard	Strength conforms to ISO, ANSI standard		
HYDRAULIC SYSTEM	Hydraulic oil pump	Single Zero-backlash type		
	Control valve	Sectional type with main relief valve and tilt lock valve		
	Main relief valve set pressure	16.7MPa (2.0t:18.1MPa)		
	Lift cylinder	Piston type without return hose: 2W, 3F, 3V Mast Ram type: 2F Mast		
	Suction filter	150-mesh, wire netting		
	Micron filter	20-micron paper type (Cartridge type)		
	Hydraulic Tank capacity	15 Liter		
LOADING SYSTEM	Mast	All roller mast, Grease sealed roller bearing		
	Carriage	Class-II		
	Forks	Forged alloy steel, Hook type, Conform to ITA standard		
INSTRUMENTS	Meters	4-Mode hour meter, Battery capacity meter, Speedometer		
	Indicators	Parking brake warning, Brake fluid level warning, Seat belt warning in LCD		
	Switches	Direction and Lighting switch, Key switch, Back operation lighting switch		